



Review in Advance first posted online  
on January 31, 2014. (Changes may  
still occur before final publication  
online and in print.)

## The Role of Sleep in Emotional Brain Function

Andrea N. Goldstein<sup>1,2</sup> and Matthew P. Walker<sup>1,2</sup>

<sup>1</sup>Helen Wills Neuroscience Institute, University of California, Berkeley,  
California 94720-1650; email: mpwalker@berkeley.edu

<sup>2</sup>Department of Psychology, University of California, Berkeley, California 94720-1650

Annu. Rev. Clin. Psychol. 2014. 10:23.1–23.30

The *Annual Review of Clinical Psychology* is online at  
<http://clinpsy.annualreviews.org>

This article's doi:  
10.1146/annurev-clinpsy-032813-153716

Copyright © 2014 by Annual Reviews.  
All rights reserved

### Keywords

sleep, rapid-eye movement (REM), emotion, memory, major depression,  
posttraumatic stress disorder (PTSD)

### Abstract

Rapidly emerging evidence continues to describe an intimate and causal relationship between sleep and emotional brain function. These findings are mirrored by long-standing clinical observations demonstrating that nearly all mood and anxiety disorders co-occur with one or more sleep abnormalities. This review aims to (a) provide a synthesis of recent findings describing the emotional brain and behavioral benefits triggered by sleep, and conversely, the detrimental impairments following a lack of sleep; (b) outline a proposed framework in which sleep, and specifically rapid-eye movement (REM) sleep, supports a process of affective brain homeostasis, optimally preparing the organism for next-day social and emotional functioning; and (c) describe how this hypothesized framework can explain the prevalent relationships between sleep and psychiatric disorders, with a particular focus on posttraumatic stress disorder and major depression.

## Contents

|  |       |
|--|-------|
| INTRODUCTION .....   | 23.2  |
| NEUROBIOLOGY OF THE SLEEPING BRAIN .....                                     | 23.3  |
| IMPACT OF SLEEP LOSS ON EMOTIONAL BRAIN FUNCTION:                            |       |
| REACTIVITY AND RECOGNITION .....   | 23.3  |
| Emotional Reactivity .....   | 23.3  |
| Emotion Recognition and Expression .....                                     | 23.6  |
| BENEFITS OF SLEEP ON EMOTIONAL BRAIN FUNCTION .....                          | 23.7  |
| Fear Conditioning: Acquisition, Generalization, and Extinction .....         | 23.7  |
| Emotional Memory .....   | 23.8  |
| RAPID-EYE MOVEMENT SLEEP HOMEOSTASIS OF                                      |       |
| AFFECTIVE BRAIN FUNCTION .....   | 23.9  |
| Emotional Memory Resolution: Sleeping to Forget and Sleeping to Remember ... | 23.11 |
| Rapid-Eye Movement Sleep Emotion Recalibration .....                         | 23.13 |
| IMPLICATIONS FOR PSYCHIATRIC CONDITIONS .....                                | 23.19 |
| Posttraumatic Stress Disorder .....  | 23.19 |
| Major Depression .....   | 23.21 |
| CONCLUSION .....   | 23.23 |

## INTRODUCTION

The ability of the human brain to generate, regulate, and be guided by emotions represents a fundamental process governing our personal lives, our mental health, and our societal structure. Advances in cognitive neuroscience over the past two decades have helped characterize the mechanisms underlying affective brain processes (Critchley 2005, Delgado et al. 2006, Hartley & Phelps 2010, Ochsner et al. 2009), translationally bridging animal models of emotion regulation and relevant clinical disorders (Davidson 2002, Delgado et al. 2006, Drevets et al. 2008, Etkin 2010). In parallel, an exciting collection of recent human neuroscience findings has established a causal role for sleep in the optimal regulation of affective brain function. Moreover, these reports offer tentative neural explanations for the pervasive co-occurrence of sleep abnormalities in psychiatric disorders (Armitage 2007, Buysse 2004, Franzen & Buysse 2008, Gottesmann & Gottesman 2007, Harvey et al. 2003, Tsuno et al. 2005).

Here, we first review basic experimental data in humans that establish an obligate symbiosis between sleep and affect, both the maladaptive consequences caused by the absence of sleep and adaptive benefits following the presence of sleep, with an emphasis on rapid-eye movement (REM) sleep. Building on these findings, we next propose a REM sleep neurobiological framework that may account for the observed interactions between sleep and affective brain function. We conclude by discussing how basic experimental evidence, and our hypothesized REM sleep framework, may provide a mechanistic and therapeutic understanding of the prominent co-occurrence of sleep disruption and affective disorders, with specific emphases on posttraumatic stress disorder (PTSD) and major depression. It should be noted that this review targets the relationship between sleep and emotional processing. In this necessarily focused capacity, it does not consider the nonetheless fascinating, but currently less well-characterized, interaction between sleep and mood states; the latter is considered distinct from emotions by us and others. Emotions are short-lived events, often

23.2

Goldstein • Walker



in response to external stimuli, whereas mood states are more sustained events, often internally generated (Mendl et al. 2010).

## NEUROBIOLOGY OF THE SLEEPING BRAIN

Before considering the impact of sleep on emotional brain function, we first outline neurobiological features that are important links to these two processes in subsequent sections. In humans (and other mammals), sleep is separated into two main types: REM sleep and non-rapid-eye movement (NREM) sleep, the latter is further subdivided into four stages (corresponding to increasing depth of sleep). These sleep stages are associated with dramatic alterations in functional brain activity and brain neurochemistry, with changes in REM sleep the most relevant to this review. Neuroimaging studies reveal significant activity increases during REM sleep in emotion-related regions both subcortically, in the amygdala, striatum, and hippocampus, and cortically, in the insula and medial prefrontal cortex (mPFC) (Dang-Vu et al. 2010, Miyauchi et al. 2009, Nofzinger 2005). These changes in functional brain activity are paralleled (and likely governed) by striking alterations in neurochemistry (Kametani & Kawamura 1990, Marrosu et al. 1995, McGinty & Harper 1976). Perhaps most remarkable is a substantial reduction in levels of noradrenaline (norepinephrine) during REM sleep, falling to concentrations below that of either NREM sleep or wake (Kametani & Kawamura 1990, Marrosu et al. 1995, Ouyang et al. 2004, Park 2002, Shouse et al. 2000), the lowest of any time during the 24-h period. This REM sleep reduction is pertinent to emotion processing because noradrenaline is associated with numerous arousal-related emotional processes within the brain (and body) and, in dysfunctional ranges, is associated with specific psychopathologies, including PTSD and major depression.

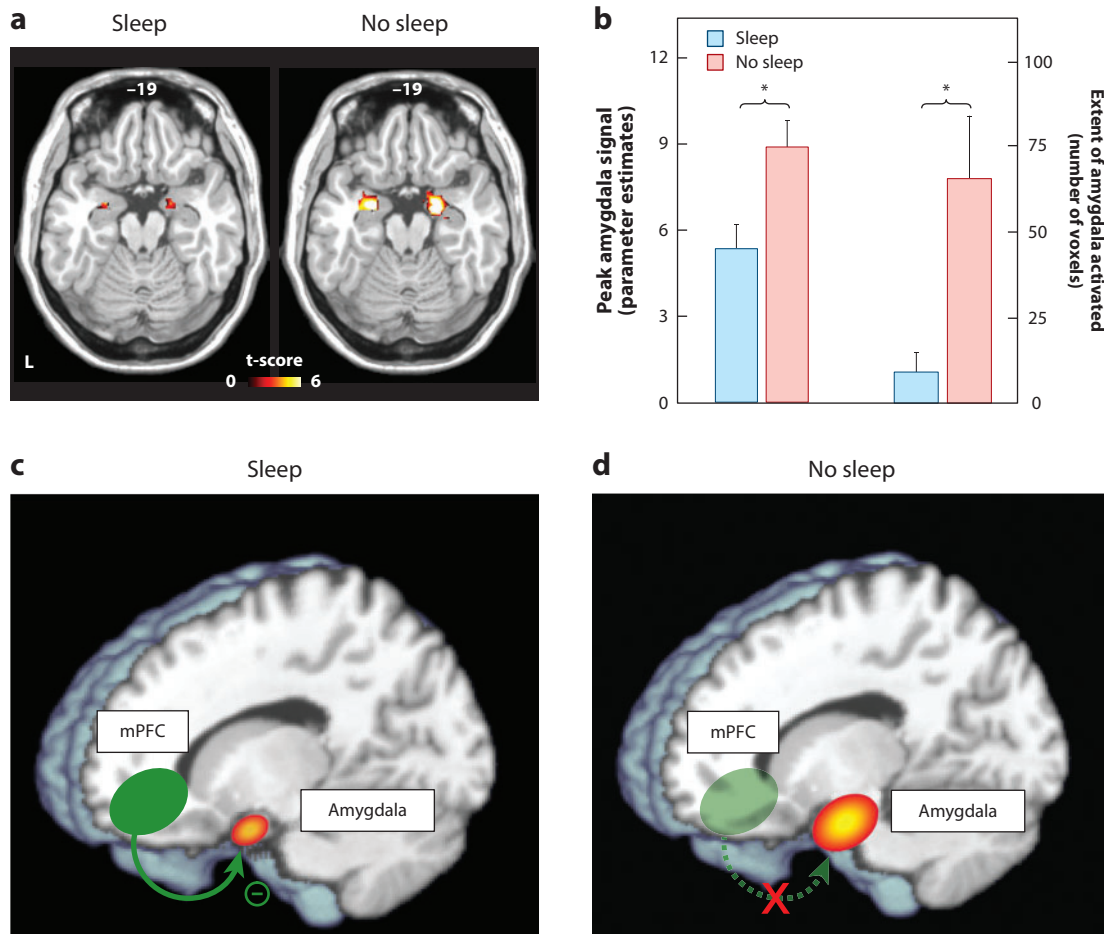
Therefore, the neuroanatomical and neurochemical changes that dominate REM sleep show a strong convergence with waking brain mechanisms of emotion reactivity, regulation, and consequential action (Dolcos et al. 2005); themes that we return to throughout the remaining sections.

## IMPACT OF SLEEP LOSS ON EMOTIONAL BRAIN FUNCTION: REACTIVITY AND RECOGNITION

### Emotional Reactivity

Together with impairments of attention, alertness, and memory, sleep loss has consistently been associated with subjective reports of irritability and emotional volatility (Horne 1985). Restricting sleep to only five hours a night across a one-week period leads to a progressive increase in emotional disturbance in participants on the basis of questionnaire mood scales, together with diary documentation of increasing subjective emotional difficulties (Dinges et al. 1997). Moreover, accumulated sleep loss leads to an amplification of negative emotions in response to disruptive daytime experiences while blunting the affective benefit associated with goal-enhancing activities (Zohar et al. 2005). Congruently, one night of experimentally controlled sleep loss increases subjective reports of stress, anxiety, and anger in response to low-stress situations (Minkel et al. 2012) and increases impulsivity towards negative stimuli (Anderson & Platten 2011). This is of particular clinical interest considering that impulsivity is significantly correlated with aggressive behavior and suicidality (Plutchik 1995), both of which are associated with sleep disruption (Bernert & Joiner 2007, Kamphuis et al. 2012).

Studies assessing objective physiological and neural measures of affect have provided additional verification of, and explanatory mechanisms for, emotional dysregulation following sleep deprivation. Assessed using functional magnetic resonance imaging, one night of sleep deprivation



**Figure 1**

The impact of sleep deprivation on emotional brain reactivity and functional connectivity. (a) Amygdala response to increasingly negative emotional stimuli in sleep-deprived and sleep-rested (control) conditions. (b) Corresponding differences in the intensity and volumetric extent of amygdala activation between the two groups (average  $\pm$  SEM of left and right amygdala). Error bars indicate SEM; both the intensity and volumetric differences in amygdala activation were significantly different between the rested and deprived groups, with significance less than  $p < 0.01$ . (c) Changes in functional connectivity between the medial prefrontal cortex (mPFC) and the amygdala. With sleep, the prefrontal lobe was significantly connected to the amygdala, known to exert an inhibitory top-down control influence. (d) Without sleep, however, amygdala-mPFC connectivity was decreased, potentially diminishing top-down control and resulting in an overactive amygdala. Modified with permission from Yoo et al. (2007). Abbreviations: mPFC, medial prefrontal cortex; SEM, standard error of the mean.

triggers a 60% amplification in reactivity of the amygdala in response to emotionally negative pictures, relative to a normal night of sleep (Figure 1a,b) (Yoo et al. 2007). Moreover, this increase in amygdala reactivity is paired with a reduction in functional connectivity with regions of the mPFC that exert top-down regulatory control of the amygdala (Figure 1c,d) yet increased coupling with the fight/flight adrenergic-activating brain stem center of the locus coeruleus. A similar profile of exaggerated amygdala reactivity and reduced prefrontal connectivity occurs after five nights of 4-h sleep restriction, which is arguably a more ecologically relevant paradigm in the context of societal sleep behavior and clinical disorders (Motomura et al. 2013). Moreover, habitual subjective

sleep quality outside of the laboratory is also significantly related to amygdala reactivity, as well as features of negative affect and stress (Prather et al. 2013). Additionally, interindividual differences in the change in connectivity between the amygdala and mPFC caused by sleep deprivation accurately predict the concurrent increase in subjective anxiety (Motomura et al. 2013).

Although the majority of studies to date have focused on changes within the central nervous system (and specifically brain), it is of note that such central alterations are paralleled by changes in peripheral nervous system physiology. One night of sleep deprivation amplifies pupil diameter responses—an index of peripheral autonomic nervous system reactivity—during the passive viewing of negative emotional picture stimuli (Franzen & Buysse 2008). Congruently, sleep deprivation also increases sympathetic dominance of the autonomic nervous system, indexed by changes in heart rate variability (Sauvet et al. 2010, Zhong et al. 2005). The latter is important because this sympathetic bias is associated with a lack of flexibility and capacity to respond to emotional challenges, and has been positively associated with psychopathology (Appelhans & Luecken 2006).

Growing evidence suggests that sleep loss imposes a bidirectional nature of affective imbalance, additionally triggering excessive reactivity to positive, reward-relevant stimuli. One night of sleep loss enhances reactivity throughout regions of the dopaminergic mesolimbic systems in response to pleasure-evoking emotional picture stimuli (Gujar et al. 2011). As with aversive reactivity, this enhanced mesolimbic reward sensitivity is further associated with decreased functional connectivity in regions of the medial and orbital prefrontal cortex. Similar enhanced mesolimbic reactivity following sleep deprivation can occur using monetary reward incentive paradigms (Libedinsky et al. 2011, McKenna et al. 2007, Venkatraman et al. 2007). Beyond more abstract reward stimuli, such as money, this impact of sleep loss extends to more primary reward-motivated behaviors, including that of appetitive food desire. Both acute and chronic sleep loss are associated with elevated reactivity to food stimuli in salience and hedonic regions of the striatum and amygdala, together with blunted activity in appetitive choice and decision-making regions of the frontal cortex (Benedict et al. 2012, Greer et al. 2013, Killgore et al. 2013, St-Onge et al. 2012). Moreover, these neural changes are accompanied by an increased preference for higher-calorie foods (Greer et al. 2013) and greater tendencies to overeat (Killgore et al. 2013).

In addition to changes in neural reactivity at the time of experiencing an emotional event, sleep loss further alters the preemptive neural anticipation of impending emotional experiences in both the amygdala and anterior insula cortex (Goldstein et al. 2013). Of special clinical relevance, trait anxiety levels predict interindividual differences in the extent of this exaggerated sleep-deprived anticipation response (Goldstein et al. 2013). Specifically, high trait-anxious participants express the most severe increase in anticipatory reactivity under conditions of sleep loss; this is a concern because these are already the individuals at greatest risk for developing an anxiety disorder.

Amplified anticipatory responses following sleep deprivation are also observed for reward-relevant cues. One night of sleep deprivation elevates anticipatory activity within the reward-sensitive region of the striatum to monetary decisions that can lead to either future reward payoffs or losses—especially when those gambles are risky (Venkatraman et al. 2007). Consistent with studies discussed above regarding appetitive food stimuli, the increases in subcortical striatal reactivity following sleep deprivation co-occurs with blunted activity in anterior insula cortex and orbitofrontal cortex, specifically to monetary losses. Thus, sleep deprivation appears to trigger a state where rewards are overvalued (increased striatal sensitivity), yet losses (through punishment) are undervalued.

Taken as a whole, these data establish that insufficient sleep exaggerates subcortical limbic and striatal responses to both negative and positive affective stimuli, commonly associated with impoverished prefrontal cortex activity and/or connectivity. The consequence appears to be a pendulum like, bidirectional state of emotion imbalance at both ends of the valence spectrum, fitting early

anecdotal reports of affective liability following a lack of sleep (Dahl 1996). Furthermore, this exaggerated reactivity can, if cued, be observed preemptively before the emotional stimulus itself.

Such a model of altered emotion reactivity following sleep loss is of translational relevance for at least three clinical areas. First, remarkably similar patterns of altered mesolimbic system emotion reactivity, as well as limbic-prefrontal cortex connectivity, have been reported in several affective psychopathologies, including major depression, bipolar disorder, generalized anxiety disorder, and PTSD (Davidson 2002, Drevets et al. 2008, Etkin 2010, Etkin & Wager 2007, Nitschke et al. 2009, Paulus & Stein 2006, Rauch et al. 2000, Shin et al. 2006, Siegle et al. 2007). Crucially, every one of these clinical conditions expresses highly comorbid sleep disruption (Harvey 2011, Peterson & Benca 2006), and in some of these disorders, sleep abnormalities form part of their diagnostic criteria. Considering the overlap between the neural correlates of such conditions that demonstrate co-occurring sleep disruption and the patterns of neural dysfunction that can be experimentally induced by sleep deprivation, these findings raise the important issue of whether sleep loss plays a causal role in the etiology of these conditions. Moreover, should sleep be a contributing factor, it would represent a novel treatment intervention target (Harvey et al. 2011).

Second, in the context of reward sensitivity, sleep disturbance is a recognized hallmark of addiction (Arnedt et al. 2007, Brower & Perron 2010, Dimsdale et al. 2007, Pace-Schott et al. 2005), leading to the recent proposal that sleep loss represents a common and reliable predictor of relapse in numerous addiction disorders (Brower & Perron 2010). Additionally, a prospective study has demonstrated that sleep problems assessed during childhood significantly predict early onset of drug and alcohol use years later in adolescence, even when controlling for effects of anxiety and attention deficits (Volkow et al. 2009). As such, the mesolimbic dopaminergic system appears to represent one common pathway through which the effects of sleep loss and heightened addiction sensitivity can be understood. The experimental evidence discussed above, demonstrating an interaction between a lack of sleep and enhanced mesolimbic reward reactivity, implicates sleep loss as a predisposing and causal (rather than co-occurring) risk factor in heightened responsiveness and hence acquired addiction potential for use of reward-stimulating drugs. Moreover, beyond acquisition, these findings also indicate a possible role for sleep disruption in the maintenance of addiction habits, especially during attempted withdrawal, leading to higher relapse rates.

Third, although anticipation is generally an adaptive process, aiding preparatory responses to potentially threatening or rewarding events, exaggerated expectancy activity, such as that observed following sleep deprivation, can be maladaptive. In the context of aversive events, increased anticipatory limbic activity positively predicts clinical features of anxiety disorders, such as worry and rumination (Etkin & Wager 2007, Nitschke et al. 2009, Paulus & Stein 2006), many of which express co-occurring impairments in the quantity and quality of sleep (Papadimitriou & Linkowski 2005). Perhaps more concerning is that individuals with higher levels of trait anxiety, who are already at higher risk for developing an anxiety disorder, appear to be the most vulnerable to these anxiogenic effects of insufficient sleep (Goldstein et al. 2013).

### Emotion Recognition and Expression

Intriguingly, a number of studies have reported what may at first be considered a paradoxical blunting, rather than overestimation, in the subjective rating of emotions in others by sleep-deprived participants. For example, sleep deprivation decreases the subjective intensity ratings of threat-relevant (angry) and reward-relevant (happy) static facial expressions (van der Helm et al. 2010). Sleep loss also decreases the outward expression of emotion by sleep-deprived individuals, as judged by expert raters (Minkel et al. 2011). Similarly, decreases in the vocal expression of positive emotion by deprived participants is observed after a single night of sleep loss, suggesting that

23.6 Goldstein • Walker



multiple routes of emotional expression (e.g., facial muscles, vocalizations) are compromised by insufficient sleep (McGlinchey et al. 2011). In addition to diminishing outward emotive expression, sleep deprivation also slows the generation of facial reactions in response to a visual presentation of faces (Schwarz et al. 2013). Of concern, insufficient sleep appears to trigger as much, if not more, of an impact on emotional expression in young children. Recent evidence demonstrates that three-year-olds who do not obtain an afternoon nap show dysregulation of both positive and negative emotional expression in response to emotional stimuli, relative to those who have taken a nap (Berger et al. 2012).

The potential disparity between these impairments and the objective neural data described above, which have reported amplifications (rather than impairments) in limbic brain reactivity following sleep deprivation, can be reconciled when considering the concomitant neural impairments in the prefrontal cortex. Not only are prefrontal regions implicated in top-down regulatory control of subcortical limbic networks, but they also critically integrate primary affective signals arising from these subcortical systems (such as the brain stem, limbic system, and basal ganglia) into second-order maps of the internal state of the organism (Craig 2010, 2011; Critchley 2005, 2009; Harrison et al. 2010). It has been argued that only through such mapping, and hence appreciation of the current state of the body in the frontal lobe, can the brain select appropriate behavioral actions for the organism (actions that include emotion expression) (Craig 2010, 2011; Critchley 2005, 2009; Harrison et al. 2010). Set against this evidence, the above disparate findings may be resolved. Specifically, the sleep-deprived brain may suffer a mismatch between excessive subcortical reactivity and impaired higher-order prefrontal functioning, the latter preventing optimal integration and hence use of the former, as well as control over the former. As a consequence, there can be a failure of affectively guided judgments, decisions, and downstream behavioral emotive (re)actions.

## BENEFITS OF SLEEP ON EMOTIONAL BRAIN FUNCTION

### Fear Conditioning: Acquisition, Generalization, and Extinction

Beyond emotion reactivity, recognition, and expression, sleep has been demonstrated to also play an influential role in modulating conditioned fear. In classical fear conditioning paradigms, neutral items (e.g., a tone) are repeatedly paired with a coinciding noxious event (unconditioned stimulus, e.g., electric shock), triggering fear reactions. After an association is formed between these two elements, the presentation of the previously neutral item alone (now referred to as the conditioned stimulus, the tone, in this example) is sufficient to elicit a conditioned fear response. However, if this conditioned stimulus is subsequently represented (the tone), but now in the absence of the coinciding unconditioned stimulus (the shock), the fear response to the conditioned stimulus (the tone) gradually dissipates—a process known as extinction. Importantly, extinction is not accomplished by unlearning the old fear association but instead by new learning of fear inhibition (Phelps et al. 2004). Beyond learning such direct associations, contextual cues can also modify fear responses. After fear conditioning, even the testing environment itself—where the conditioned stimulus (the tone) is associated with the unconditioned stimulus (the shock)—can signal an unsafe context and trigger a fear reaction. Conversely, a safe context that was not previously associated with the conditioned-unconditioned stimulus pairing, such as a novel or extinction environment, can promote inhibition of the fear response, even when the conditioned stimulus (tone) is presented. In the following sections, we describe the impact of sleep and sleep loss on (a) the consolidation of fear-conditioned learning, (b) the extinction of conditioned fear, and (c) the appropriate maintenance or inhibition of a fear response depending on unsafe or safe contexts.

Focusing first on consolidation, a night of sleep strengthens conditioned fear responses (neural, physiological, and behavioral) compared to the absence of intervening sleep, and as a consequence, results in superior discrimination of fear-related from non-fear-related cues (Menz et al. 2013). Furthermore, the magnitude of this sleep-dependent beneficial fear discrimination was positively predicted by the amount of intervening REM sleep (Menz et al. 2013). Together, these findings suggest that sleep, and specifically REM sleep, consolidates conditioned fear memories, allowing for an improved next-day sensitivity to discriminate between threatening and nonthreatening stimuli.

In addition to strengthening fear memories, sleep also adaptively facilitates the subsequent extinction of conditioned fear, a process that is known to be accomplished by way of top-down PFC inhibition of the amygdala. An intervening period of sleep, and specifically one containing REM sleep, subsequently promotes more rapid diminution of fear responses (here, skin conductance) and with it the beneficial reengagement of ventromedial PFC involvement during postsleep fear extinction recall (Spoormaker et al. 2012). The latter finding is relevant considering that the ventromedial PFC is a region known to be necessary for successful development of lasting fear extinction (Phelps et al. 2004). Combined with the findings described above, these data indicate that intervening sleep not only strengthens conditioned fear but also primes the neural mechanisms to extinguish fear the next day, should experience dictate it. Moreover, that the extent of these benefits appears to correlate with the amount of REM sleep is perhaps no coincidence: The brain areas recognized to support fear acquisition and extinction (mPFC, amygdala, hippocampus) are all reactivated during REM sleep (Dang-Vu et al. 2010, Miyachi et al. 2009, Nofzinger 2005, Phelps et al. 2004). And through such REM sleep, brain network restoration may aid the appropriate return of top-down PFC action on the amygdala, governing these processes (van der Helm et al. 2011).

Beyond simply strengthening or extinguishing fear responses, recent evidence demonstrates that sleep, relative to time spent awake, preferentially modifies the appropriate expression of fear, depending on whether the conditioned stimulus (the tone) is presented in an unsafe or a safe surrounding context (Menz et al. 2013, Pace-Schott et al. 2009). As a consequence, individuals who sleep demonstrate significantly more adaptive expressions of fear, either maintaining or inhibiting fear responses, depending on the presence of unsafe or safe contextual cues, respectively (Menz et al. 2013, Pace-Schott et al. 2009). Sleep therefore facilitates the most appropriate or “intelligent” expression of conditioned fear, based on environmental information signaling threat or safety.

As a whole, these data from fear conditioning experiments indicate that sleep, including REM sleep, supports adaptive fear responses across numerous levels. The benefits of such processes encourage proper generation and maintenance of fear responses in dangerous situations, while inhibiting fear responses to nondangerous situations. In contrast, sleep deprivation impairs these same processes due, in part, to a loss of top-down prefrontal cortex control of subcortical limbic regions. This is particularly relevant in a clinical context because deficits in the extinction and ability to appropriately utilize surrounding contextual information underlie fear-related disorders, such as specific phobia and PTSD (Phelps et al. 2004), the latter associated with marked sleep disruption (Germain 2013). Early evidence already suggests a treatment intervention promise: Patients who slept immediately after exposure treatment—a form of fear extinction learning—showed greater subjective reductions in anxiety and negative cognition one week after treatment relative to those who remain awake for some time after treatment (Kleim et al. 2013).

### Emotional Memory

REM sleep also plays an influential role in the processing of affective information beyond basic fear conditioning, particularly in the “offline” consolidation of emotional episodic (autobiographical)

Goldstein • Walker

23.8





experiences (for reviews, see Payne & Kensinger 2010, Walker 2009, and Walker & van der Helm 2009). Early work demonstrated that such offline emotional memory consolidation could be attributed to late-night sleep, a time period rich in REM sleep (Wagner et al. 2001). Moreover, this preferential emotional memory retention persists years later (Wagner et al. 2006). Even individual emotional elements from a single affective experience can be selectively discriminated and retained during sleep. By experimentally varying the foreground and background elements of photographs, sleep targets the retention of emotional foreground objects within scenes, relative to either nonemotional foreground items or the peripheral background elements of the same scenes (Payne et al. 2012). Thus, sleep (and not wakefulness) can separate emotionally relevant from irrelevant components of a single memory experience for selective consolidation (Payne et al. 2012).

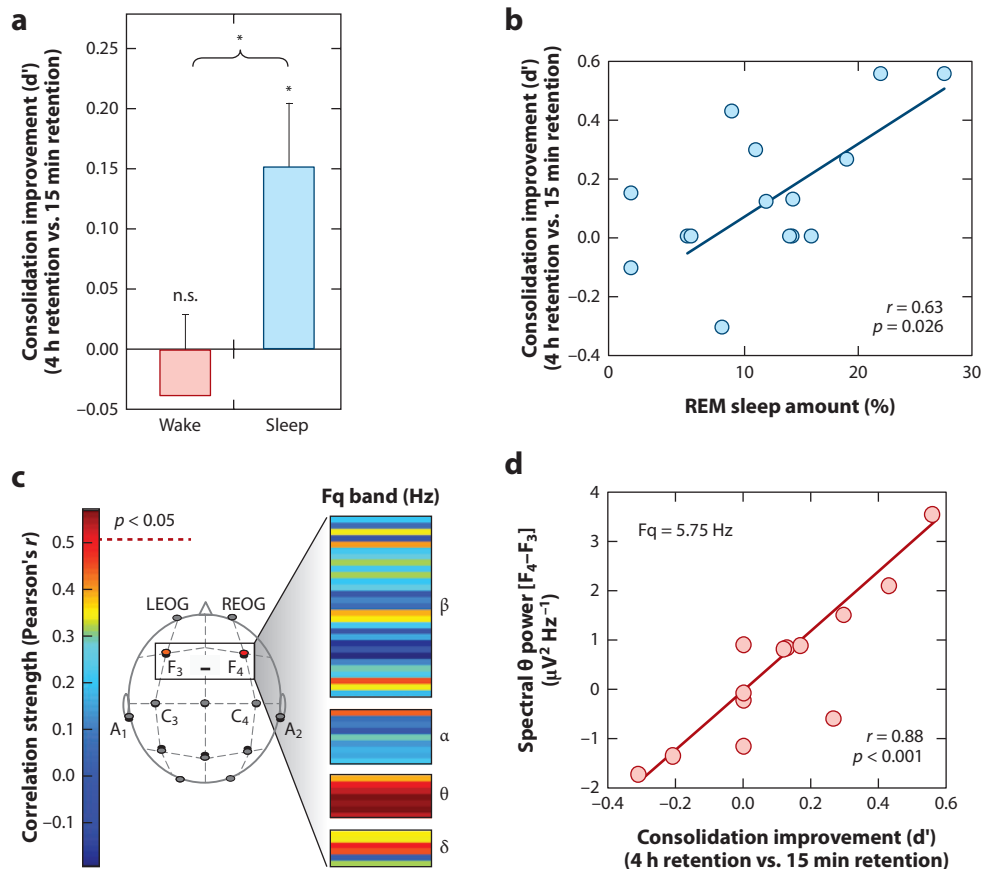
Mechanistically, not only does the amount of time and speed of entry into REM sleep predict the degree of subsequent strengthening and hence offline consolidation of emotional (and not neutral) memory (**Figure 2a,b**), but the amount of electroencephalographic (EEG)  $\theta$  activity (4–7 Hz)—a dominant electrical oscillation of REM sleep expressed over the prefrontal cortex—predicts the overnight emotional memory retention benefit (**Figure 2c,d**) (Nishida et al. 2009). These findings have led to the proposal that REM sleep represents a neurobiological brain state particularly amenable to selective emotional memory processing (Hu et al. 2006, Paré et al. 2002, Walker 2009, Walker & van der Helm 2009), with  $\theta$  oscillations proposed as a carrier frequency that allows disparate brain regions that initially encode different aspects of the emotional experience (e.g., visual elements, auditory elements, olfactory elements, etc.) to selectively interact offline. By doing so, REM sleep  $\theta$  may afford the ability to discriminately select and strengthen distributed aspects of specific emotional memory representations across related but different anatomical networks, and/or promote their integration into preexisting autobiographical memory networks (Cahill 2000, Jones & Wilson 2005).

It is also possible that emotional memory consolidation during sleep receives an additional contribution from (although is not necessary for) the well-known changes in glucocorticoids (cortisol in humans). In humans, cortisol secretion and REM sleep correlate in their incidence during the night, with both dominating early in the morning close to the time of awakening. Cortisol is also released in response to stressful events (Sapolsky et al. 2000) and can independently modulate emotional memory through direct and indirect effects on the hippocampus and amygdala (McIntyre et al. 2012, Roozendaal et al. 2009, Sapolsky et al. 2000). Moreover, experimentally increasing and decreasing cortisol concentrations prior to sleep can bidirectionally alter the magnitude of emotional memory consolidation during sleep (van Marle et al. 2013, Wagner et al. 2005). However, it should also be noted that the impact of REM sleep on memory is not dependent on circadian regulation of cortisol: Emotional memory consolidation associated with REM sleep also occurs following an afternoon nap that is decoupled from circadian timing of cortisol (Nishida et al. 2009).

Together, these results demonstrate that REM sleep preferentially governs the long-term consolidation of emotional episodic memory experiences; an effect that may be facilitated by (although can nevertheless act independently of) variations in glucocorticoids that coincide with nocturnal REM sleep. However, strengthening the memory of emotional experiences appears to be only one of at least two benefits that REM sleep offers, as we describe next.

## RAPID-EYE MOVEMENT SLEEP HOMEOSTASIS OF AFFECTIVE BRAIN FUNCTION

Building on this collection of empirical evidence, combined with the well-characterized neurobiology of sleep and emotional processing in the brain, in the following sections we set forth a REM



**Figure 2**

Rapid-eye movement (REM) sleep enhancement of negative emotional memories. (a) Offline benefit (change in memory recall for 4-h versus 15-min-old memories) across the day (wake, red bar) or following a 90-min nap (sleep, blue bar). (b) Correlation between the amount of offline emotional memory improvement in the nap group (i.e., the offline benefit expressed in the blue bar of panel a) and the amount of REM sleep obtained within the nap. (c) Correlation (Pearson's  $r$  value) between the offline benefit for emotional memory in the sleep group (expressed in blue bar of panel a) and the relative right versus left prefrontal spectral-band power (electrode F<sub>4</sub>-electrode F<sub>3</sub>) within the  $\delta$ ,  $\alpha$ ,  $\theta$ , and  $\beta$  spectral bands, expressed in average 0.5-Hz bin increments. Correlation strength is represented by the color range, demonstrating significant correlations within the  $\theta$  frequency band (hot colors), and (d) exhibiting a maximum significance at the 5.75-Hz bin. \* $p < 0.05$ ; error bars indicate SEM. Modified with permission from Nishida et al. (2009). Abbreviations: A<sub>1</sub> and A<sub>2</sub>, mastoid electrodes; C<sub>3</sub> and C<sub>4</sub>, central scalp electrodes; d', recognition memory score; Fq, frequency; LEOG, left electrooculogram; \* $p$ , statistically significant  $p$  value; REOG, right electrooculogram; SEM, standard error of the mean; vs, versus.

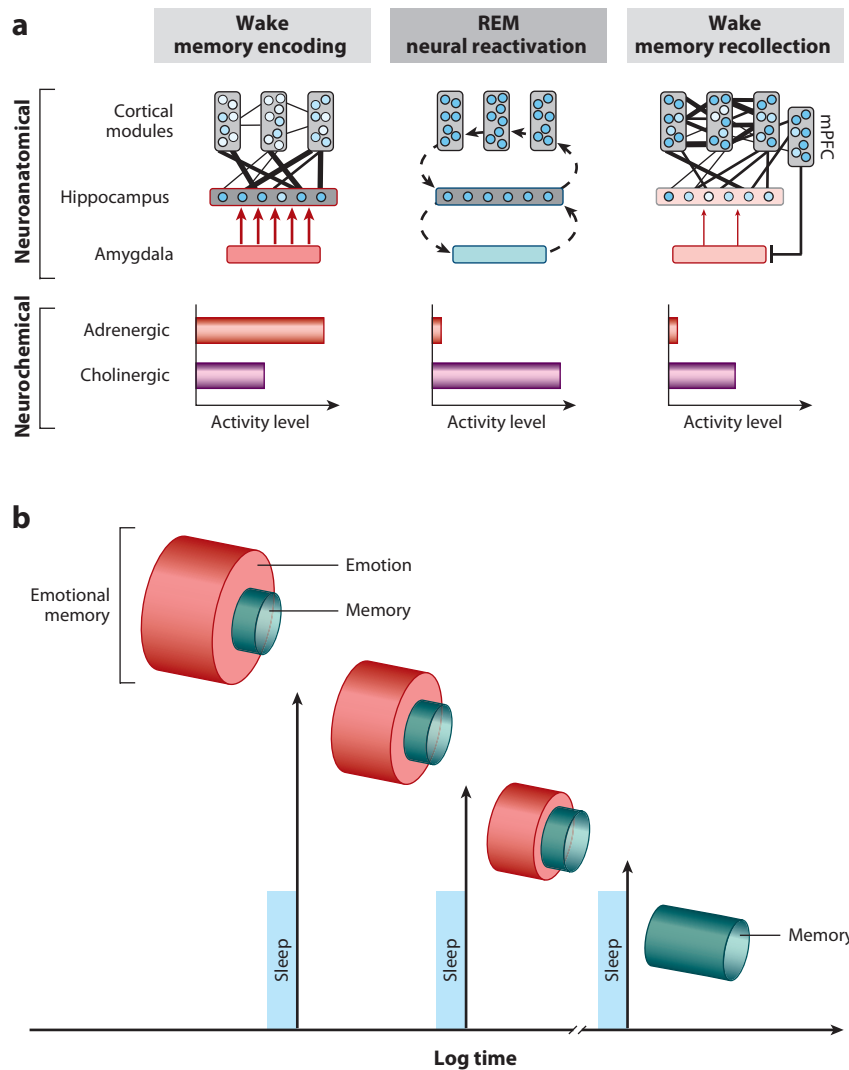
sleep emotional homeostasis hypothesis. From this framework emerge two unique, nonmutually exclusive brain benefits of REM sleep that promote adaptive emotional next-day functioning. The first describes a function of REM sleep after an emotional experience, helping resolve strong emotions associated with those challenging memories. Specifically, REM sleep is proposed to strip away the visceral charge (the emotion) from affective experiences of the prior day(s), depotentiating their emotional strength while still consolidating the information (the memory) contained

within that experience—a form of “overnight therapy.” The second outlines a role for REM sleep before an emotional experience, recalibrating the sensitivity and specificity of the brain’s response to initial emotional events. As a consequence REM sleep primes key brain regions to appropriately react to affective experiences, allowing accurate and adaptive next-day discrimination of one emotional experience from another by faithfully registering their respective salient values.

### Emotional Memory Resolution: Sleeping to Forget and Sleeping to Remember

Our first proposed function of REM sleep takes place after the occurrence of emotional events and involves aiding the reprocessing of prior affective experiences, including those most traumatic. Although there is abundant evidence to suggest that emotional experiences persist in our autobiographies over time (strengthening the memory) (Dolcos et al. 2005), an equally remarkable but less noted change is a reduction in the affective tone associated with their recall (depotentialization of emotion). Affective experiences appear to be remembered more robustly than neutral memories due to a well-characterized set of adrenergic and peripheral autonomic reactions elicited at the time of the experience, orchestrated, in part, by the locus coeruleus (McGaugh 2004). These adrenergic bursts at the time of affectively charged experiences are believed to adaptively prioritize the formation (and hence long-term retention) of such salient information within the brain, creating what is commonly termed an emotional memory (**Figure 3a**). However, the later recall of these memories tends not to be associated with the same magnitude of autonomic (re)activation as that elicited at the moment of experience—suggesting that, over time, the affective “blanket” (the emotion) that originally tagged the memory at the time of learning has been removed, whereas the information of the experience (the memory) remains (**Figure 3b**). We propose here [and elsewhere (van der Helm & Walker 2012, Walker 2009, Walker & van der Helm 2009)] that the unique neurobiological state of REM sleep supports decoupling of emotion from memory such that we sleep to forget the emotional tone, yet sleep to remember the memory of that experience. This model further posits that, if this process is not achieved, the magnitude of affective “charge” would persist, resulting in a condition of chronic anxiety within autobiographical memory networks.

Three specific biological features of REM sleep are proposed to provide an optimal biological milieu within which this form of overnight therapy can be achieved: neuroanatomical, neurophysiological, and neurochemical (**Figure 3a**). First, the prominent increase in activity within limbic and paralimbic structures during REM sleep (Nofzinger 2005) supports the ability for reactivation and hence (re)processing of previously acquired affective memories. Second, the neurophysiological signature of REM sleep involving dominant  $\theta$  oscillations within subcortical as well as cortical nodes offers large-scale network cooperation during REM sleep for the strengthening of distributed aspects of the emotional memory representation (e.g., perceptual, contextual), across such related but different anatomical networks. This then results in enhanced consolidation and integration of that memory. Third, these interactions during REM sleep (and perhaps through the conscious process of dreaming) critically and perhaps most importantly take place within a brain that is low in aminergic neurochemical concentration (Pace-Schott & Hobson 2002), particularly the suppressed noradrenergic input from the locus coeruleus (associated with stress and anxiety responses when highly active) (Itoi & Sugimoto 2010, Ramos & Arnsten 2007, Sullivan et al. 1999, Valentino & Van Bockstaele 2008). Therefore, REM sleep is proposed to offer a unique biological condition to achieve the strengthening and consolidation of the informational core of emotional experiences (the memory) yet additionally depotentializes and ultimately ameliorates the autonomic arousing charge originally acquired at the time of learning (the emotion). Through the process of developing stronger cortico-cortical connections, integration and assimilation of the affective event(s) in the context of past knowledge are supported. As a result, emotional experiences



**Figure 3**

The sleep to forget and sleep to remember model. (a) Neural dynamics. Emotional memory formation involves the encoding of hippocampal-bound cortical information, facilitated by the amygdala and high concentrations of aminergic activity. During rapid-eye movement (REM) sleep, these neural structures are reactivated, supporting the reprocessing of emotional memories. However, this occurs in a brain state with dramatically reduced adrenergic activity, allowing for cortical strengthening (consolidation), dissipation of previously associated emotion (visceral tone), and reestablished medial prefrontal cortex (mPFC)-amygdala regulatory control. Cross connectivity between structures is represented by the number and thickness of lines. Circles within cortical and hippocampal structures represent information nodes; the darkness of their shade reflects the extent of connectivity. The amygdala and the thickness of its arrows represent their influence upon the hippocampus. (b) Conceptual outcome. Through multiple iterations of this REM mechanism across one or multiple nights, such sleep-dependent reprocessing results in long-term strengthening of salient memories, yet a dissipation of the emotional charge. Thus, sleep transforms an emotional memory into a memory of an emotional event that is no longer emotional.



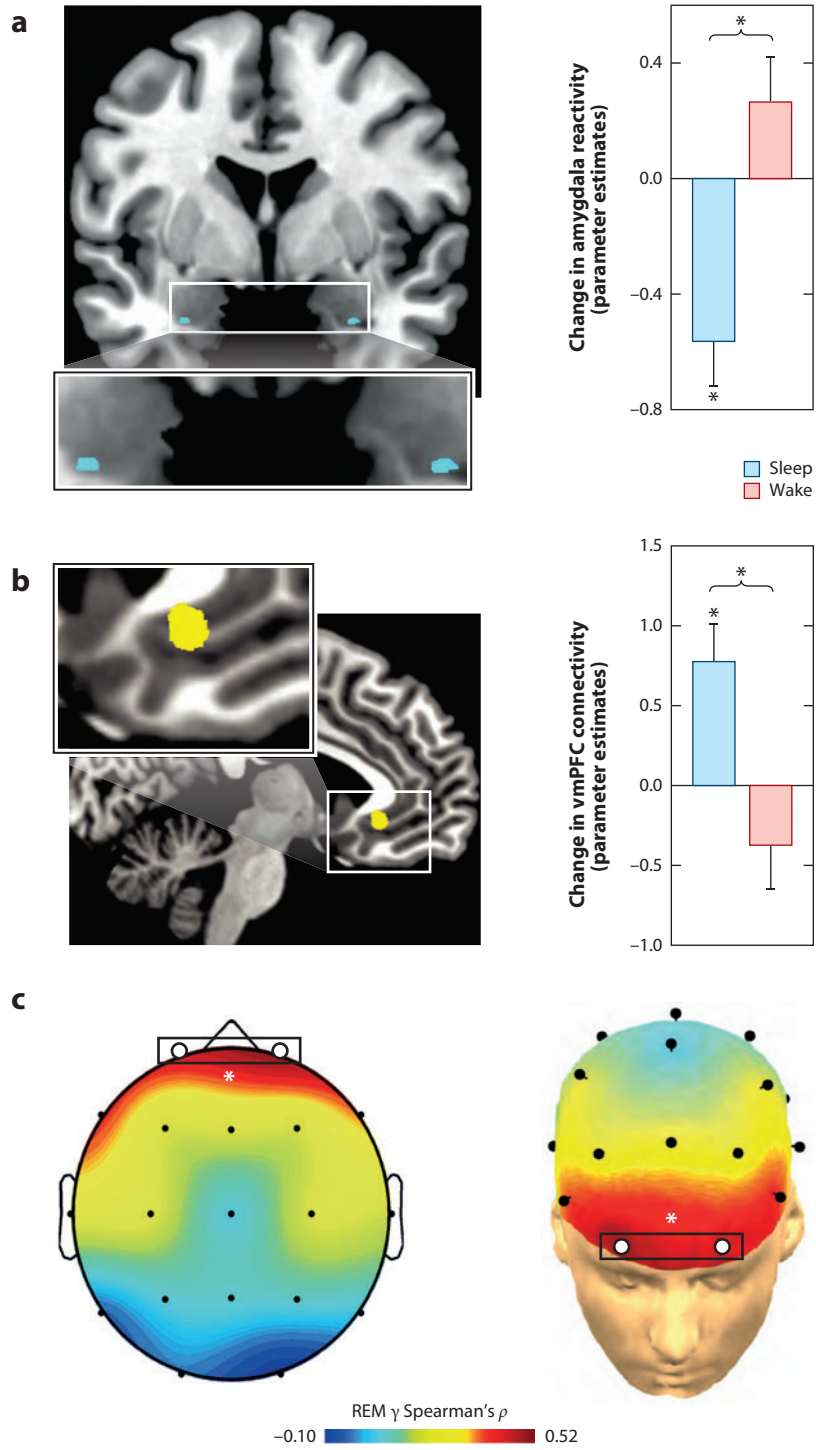
are preferentially retained long-term, but importantly, the emotion, which was initially critical to signify salience and priority at the time of learning, has been dissipated. The brain therefore preserves a memory of an emotional event, but the event no longer arouses strong emotions.

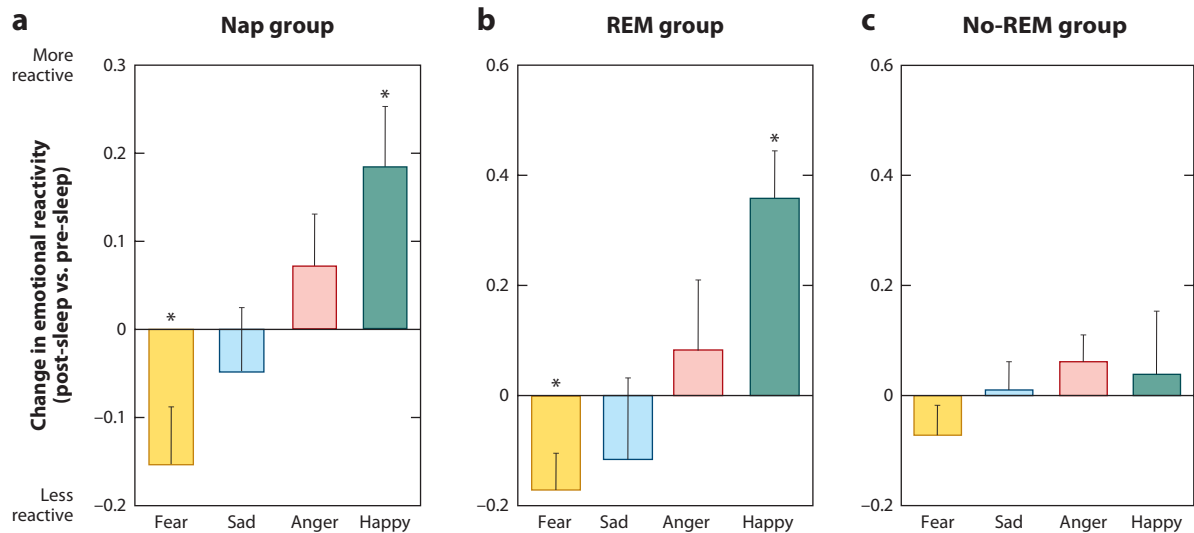
Specific predictions emerge from this model. As was partially demonstrated (see the Emotional Memory section, above), the first prediction is that the degree to which the information of those emotional experiences are retained for a long term would be proportional to the amount of post-encoding REM sleep obtained, how quickly it is achieved (REM latency), and the power of  $\theta$  oscillations during REM sleep. Evidence for all three of these predictions exists (Nishida et al. 2009, Paré et al. 2002). Second, the inverse REM sleep relationship would hold for the magnitude of emotional depotentiation after sleep. This too appears to be the case; compared to those that remained awake, individuals who slept prior to reexposure displayed a significant overnight decrease in amygdala response to previously seen emotional images (**Figure 4a**), together with a concomitant increase in amygdala-mPFC connectivity (**Figure 4b**). Furthermore, sleep also results in a significant dissipation of subjective emotional intensity ratings relative to the equivalent period of wakefulness. Additionally, the success of overnight emotion depotentiation at both the brain (amygdala) and behavioral (intensity ratings) levels is predicted by  $\gamma$  EEG activity—a validated but indirect measure of central adrenergic activity (Berridge & Foote 1991, Cape & Jones 1998, Keane et al. 1976). Specifically, those participants who express the lowest REM  $\gamma$  measurements show the greatest beneficial overnight reduction in emotion intensity (**Figure 4c**). Similarly, a daytime nap dissipates the intensity ratings of previously exposed negative emotional face expressions (Gujar et al. 2010). However, not all participants who slept demonstrated this resetting of emotional reactivity. Instead, only those who obtained REM sleep during the nap displayed such a change in emotional sensitivity to the reexperience of the same previous face stimuli (**Figure 5**). In addition to fitting with a role for sleep in emotional depotentiation, if participants are not allowed to sleep the first night after being exposed to aversive emotional stimuli, there is a failure of subsequent amygdala depotentiation to the same emotional stimulus during a memory test, even following two nights of recovery sleep (Sterpenich et al. 2007). The latter finding is relevant clinically and argues against some proposals for the use of sleep deprivation after trauma experience to facilitate forgetting. Our model would argue the opposite Sleep deprivation would prevent the beneficial removing of emotion from the memory (van der Helm & Walker 2012, Walker 2009, Walker & van der Helm 2009). Furthermore, although the emotion of the trauma can be clinically problematic, the information from the experience (the memory) is nevertheless useful, helping guide future actions based on past experience, which may prevent repetition of the same negative experience. Thus, it is the emotion that needs to be targeted, not the memory.

In summary, these studies provide support to the proposed neurobiological model of sleep-dependent emotional memory depotentiation, one in which REM sleep is capable of divorcing the visceral affective charge from prior emotional experiences while preserving the information of those episodes.

### Rapid-Eye Movement Sleep Emotion Recalibration

Our second proposed function of REM sleep takes place before the occurrence of next-day emotional events, restoring optimal emotional reactivity. Adaptive emotional responses require accurate discrimination between salient stimuli (a potential threat to be avoided, or reward to be approached) and nonsalient stimuli within the environment. Failures in the ability to differentiate salient from nonsalient information can lead to maladaptive behaviors, such as generating excessive fear responses to nondangerous situations (e.g., a car backfiring). On the basis of the marked changes in adrenergic neurochemistry described above, we propose that REM sleep offers





**Figure 5**

Differential impact of rapid-eye movement (REM) sleep on emotional reactivity. Difference in mean ratings between the presleep and postsleep test sessions across four emotion categories (fear, sad, anger, and happy) (*a*) for the nap group overall performance, (*b*) for only those in the nap group who obtained REM sleep, and (*c*) for only those in the nap group who did not obtain REM sleep. Within-group comparisons (symbol above individual bars) reflect paired t-test significance (relative to null) at  $* < 0.05$  and  $** < 0.01$ . Error bars represent standard error of the mean (SEM). Modified with permission from Gujar et al. (2010).

an overnight resetting function within key brain stem, limbic, and prefrontal brain regions. The functional consequence of this nightly recalibration is the restoration of next-day emotional brain sensitivity and specificity necessary to guide appropriate decisions and actions.

Three lines of evidence support the hypothesized capacity of REM sleep, which we describe in detail below: (*a*) the active role of REM sleep in maintaining proper waking noradrenaline tone; (*b*) that a lack of sleep, including REM sleep, alters brain stem noradrenergic cell firing, producing a profile of signal-to-noise activity that prevents accurate registration and discrimination of emotional salience; and (*c*) that altered noradrenergic brain stem activity caused by sleep loss, and restored by sleep, directly and indirectly modulates the responsive profiles of the amygdala and mPFC, two regions critically involved in detecting emotional salience.

First, the defining neurochemical feature of REM sleep compared to NREM or wake is the lack of locus coeruleus firing and thus release of its principal neurochemical, noradrenaline (Ouyang

**Figure 4**

Rapid-eye movement (REM) sleep depotentiates amygdala reactivity to prior emotional experiences. (*a*) Change in emotion reactivity: group  $\times$  test session interaction in bilateral amygdala (*blue*), demonstrating a significant decrease in activity across a night of sleep in the sleep group, yet an increase in the wake group across a day of wakefulness. (*b*) Change in functional connectivity: group  $\times$  test session interaction in the amygdala-ventromedial prefrontal cortex (vmPFC) connectivity (*yellow*), demonstrating increased connectivity from after a night of sleep yet decreased coupling after an equivalent time of wakefulness. (*c*) Topographical Spearman's correlation ( $\rho$ ) plot of the relationship between electroencephalographic (EEG)  $\gamma$  power during REM sleep and the extent of overnight emotional reactivity decrease across a night of sleep, with lower levels of prefrontal  $\gamma$  activity (marked by *white circles*) predicting a larger overnight decrease in emotional reactivity.  $*p < 0.05$ . Modified with permission from van der Helm et al. (2011).

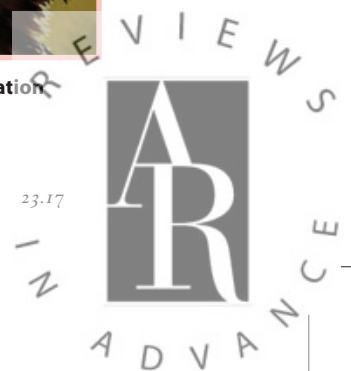
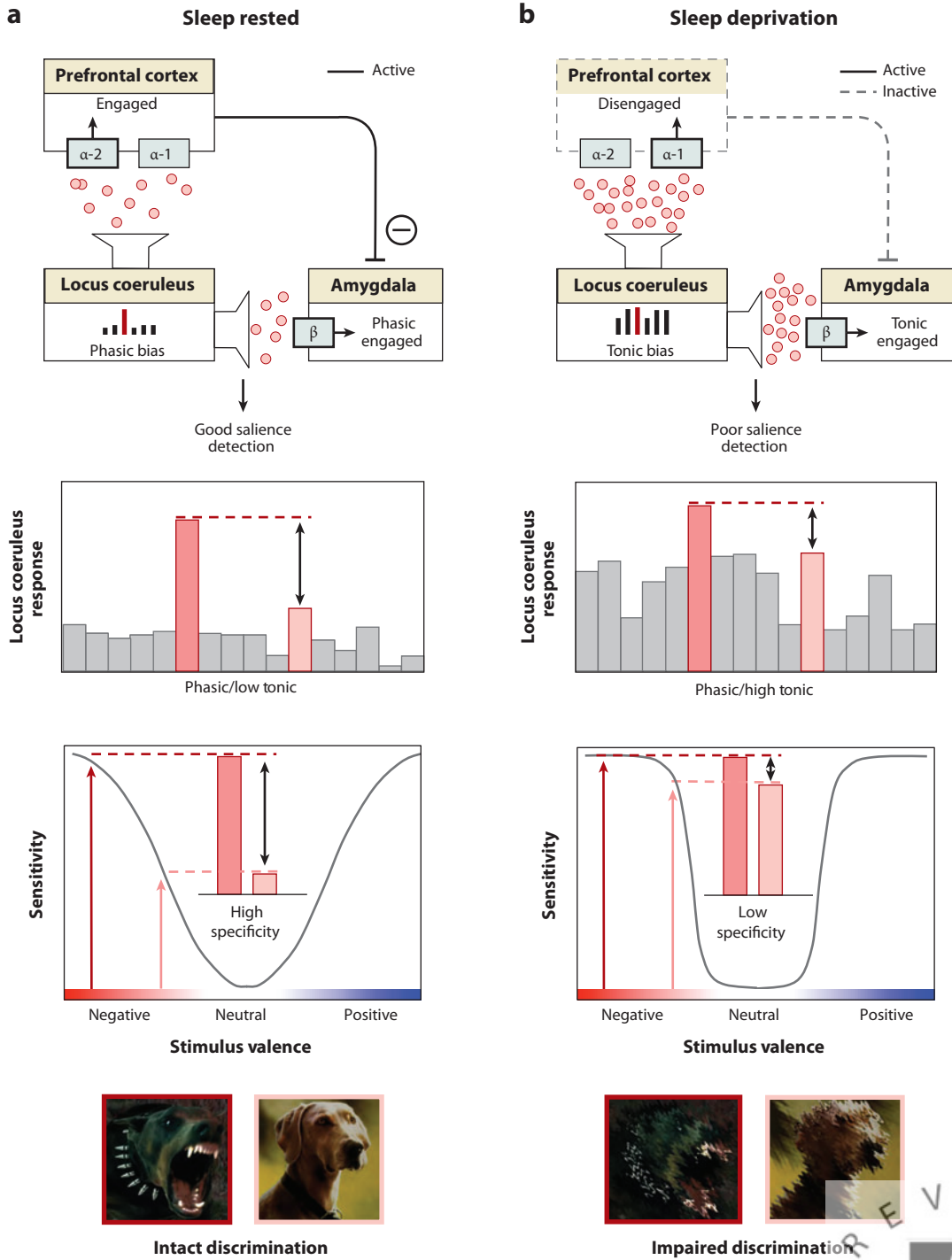
et al. 2004, Park 2002, Shouse et al. 2000). As a result, the near absence of noradrenergic concentration permeating the brain during REM sleep is potentially capable of restoring postsleep waking levels of noradrenergic tone within the brain (Kametani & Kawamura 1990, Mallick & Singh 2011, Marrosu et al. 1995, Siegel & Rogawski 1988). Conversely, a lack of REM sleep, by way of selective deprivation, increases central noradrenaline concentrations to levels that exceed those of rested waking brain function (Mallick & Singh 2011, Siegel & Rogawski 1988). Thus, a dose-dependent relationship may exist between the quantity/quality of REM sleep and the decrease of noradrenaline through the night. Moreover, an increase in REM sleep quantity/quality at night, either through pharmacological intervention (Stern & Morgane 1974, Taylor et al. 2008) or through psychopathology states such as major depression (Blier & Briley 2011, El Mansari et al. 2010, Hamon & Blier 2013, Ordway et al. 2003), would predict a proportional decrease of noradrenergic tone the next day and, with it, alterations in emotional brain function. Therefore, REM sleep may serve an noradrenergic “housekeeping” function, one that reduces and thus restores concentrations of noradrenaline to baseline each day (in humans), allowing for optimal wakeful functioning (Mallick & Singh 2011, Siegel & Rogawski 1988).

Second, experimental manipulations that evoke elevated noradrenaline levels, similar to those induced by sleep loss, impair sensitivity to salience and specificity of locus coeruleus responses. During wake, noradrenaline neurons within the locus coeruleus display two distinct modes of overall activity. In one of these modes, the locus coeruleus responds in a predominantly phasic manner, i.e., selectively to salient stimuli within the environment (i.e., salient signals) while maintaining a low level of baseline (tonic) ongoing activity (i.e., background “noise”) (Aston-Jones & Cohen 2005, Mallick & Singh 2011, Valentino & Van Bockstaele 2008). Thus, the overall threshold of reactivity to external events is optimal along a gradient of potential emotional strengths (**Figure 6a**). However, the second mode of locus coeruleus activity, one that can occur under specific conditions (e.g., stress), is characterized by a shift to high levels of persistent baseline tonic firing and elevated noradrenaline levels. As a consequence of this high tonic background activity, the phasic signals in response to external emotional stimuli result in poor signal to noise within the system

### Figure 6

Rapid-eye movement (REM) sleep emotion recalibration model. (a) Under normal sleep-rested conditions, the overnight reduction of noradrenaline levels promoted by REM sleep restores noradrenergic tone, resulting in a low tonic, high phasic locus coeruleus activity. This consequently primes downstream amygdala and prefrontal cortex (PFC) structures that, together with the locus coeruleus, form part of an emotional salience detection network (*upper panel*). Moderate next-day levels of noradrenaline, restored by REM sleep, induce PFC engagement through activation of the  $\alpha$ -2 receptor, which in turn enables top-down PFC inhibition of the amygdala, reducing the likelihood of a nonspecific amygdala response. In addition, low tonic activity in locus coeruleus enhances the fidelity of phasic responses to external emotional stimuli, relative to the low baseline firing, promoting the sensitivity needed to detect truly emotional stimuli while also retaining the ability to discriminate between degrees of emotional salience (specificity) (*middle panel*). The functional outcome of this REM sleep-recalibrated salience network state is the ability to discriminate between, and appropriately react to, emotionally salient events (e.g., threatening, aggressive dog) and nonsalient stimuli (e.g., nonthreatening dog) (*lower panel*). (b) In contrast, sleep deprivation results in high tonic locus coeruleus firing mode and increased noradrenaline concentrations, consequently impairing salience detection. Specifically, elevated noradrenaline levels increase binding to the inhibitory  $\alpha$ -1 receptor in the PFC (*upper panel*). Unlike binding to  $\alpha$ -2 receptors,  $\alpha$ -1 receptor-binding impairs PFC functioning and so reduces top-down inhibition of the amygdala. This disinhibition results in a nonspecific, generalized amygdala response to both emotionally salient and nonsalient stimuli. Such impairments are further exacerbated by high tonic baseline locus coeruleus activity, which reduces the ability to differentiate phasic signals from high baseline activity (i.e., reduced signal to noise). In this mode of activity, the locus coeruleus responds nonspecifically to both emotionally salient and nonemotionally salient information (*middle panel*). Together, these alterations to the emotional salience network, caused by sleep loss, impair the accurate discrimination of threatening from nonthreatening stimuli, resulting in persistent sensitivity and in impaired emotional specificity (*lower panel*). Abbreviations:  $\alpha$ -1, noradrenaline  $\alpha$ -1 receptor;  $\alpha$ -2, noradrenaline  $\alpha$ -2 receptor;  $\beta$ , noradrenaline  $\beta$  receptor.





and thus reduced specificity (**Figure 6b**) (Aston-Jones & Cohen 2005, Mallick & Singh 2011, Valentino & Van Bockstaele 2008). It is precisely this pattern of locus coeruleus activity and the associated increased concentrations of noradrenaline that develop under conditions of sleep deprivation (Mallick & Singh 2011). It is therefore possible that the changes in the noradrenergic system caused by sleep deprivation produce a hypervigilant brain state far less able to discriminate salient from nonsalient stimuli (**Figure 6b**). Conversely, the reduced next-day noradrenergic concentrations resulting from a recalibration during prior REM sleep (Mallick & Singh 2011) may advantageously restore this system, promoting the return of low tonic and strong phasic activity necessary for accurate emotional sensitivity and specificity.

This model complements a hypothesis posed by Siegel & Rogawski (1988), which proposed a beneficial role for REM sleep in promoting optimal next-day noradrenergic signaling. However, the mechanism underlying this prior proposal of noradrenergic modulation by REM sleep is different from the current model. The former proposes that REM sleep alters noradrenaline receptor density and, by way of this structural change, adjusts noradrenergic action. In contrast, the current theory proposes a role for REM sleep in directly regulating the concentrations of noradrenaline itself, and through this functional (rather than structural) alteration, REM sleep governs optimal next-day performance of the system.

The present model can provide mechanistic insight into how REM sleep, and conversely sleep deprivation, may influence salience detection in emotion by brain regions beyond the locus coeruleus, specifically the amygdala and PFC. The locus coeruleus modulates amygdala primarily through the “ $\beta$ ” adrenergic receptor, while influencing the PFC through two types of  $\alpha$  receptors ( $\alpha$ -1/ $\alpha$ -2 (Ramos & Arnsten 2007). Under conditions of low noradrenergic activity and low tonic/high phasic signaling promoted by REM sleep, the locus coeruleus facilitates selective amygdala responsiveness to salient stimuli in a phasic manner (through  $\beta$  receptor control) (**Figure 6a**) (Hermans et al. 2011, van Marle et al. 2009). This profile of amygdala responsiveness is further enhanced by the effects of the locus coeruleus on mPFC functioning by acting on the  $\alpha$ -2 PFC receptor (**Figure 6a**). In this mode of activity, the locus coeruleus increases mPFC engagement that enables top-down control of the amygdala, preventing the amygdala from responding non-specifically, i.e., to nonsalient stimuli (Aston-Jones & Cohen 2005, Ramos & Arnsten 2007). Thus, REM sleep optimally restores the emotional salience sensitivity and specificity of this adrenergic locus coeruleus-mPFC-amygdala functional network. In contrast, a state of sleep deprivation promotes a high background level of tonic locus coeruleus firing and increased noradrenaline concentration. This results in a similar tonic firing profile in the amygdala (**Figure 6b**) (again through the  $\beta$  receptor) (Hermans 2011, Mallick & Singh 2011, van Marle et al. 2009), resulting in low emotional signal-to-noise reactivity and decreasing specificity (the ability to discriminate stimuli along a gradient of emotional strength) while maintaining or even elevating sensitivity (magnitude of reactivity) to salient events. Moreover, this situation is further exacerbated by high noradrenaline concentrations that now impair PFC function due to a shift in binding to the (inhibitory)  $\alpha$ -1 receptor. As a result, there is diminished top-down control from the mPFC to the amygdala, releasing amygdala inhibition (**Figure 6a**) and resulting in additional generalized amygdala responses. In summary, the quiescence of locus coeruleus activity during REM sleep throughout the night restores the appropriate next-day tonic/phasic response specificity within this emotional salience network (locus coeruleus, amygdala, PFC). The functional outcome of this recalibration is the precise capacity for responding to, and discriminating between, signals of varying affective importance, resulting in a balanced degree of emotion sensitivity as well as specificity (**Figure 6a**).

Several specific predictions arise from this framework. First, REM sleep should promote increased top-down PFC control of the amygdala, whereas sleep deprivation should be associated with decreased connectivity between the PFC and amygdala, and exaggerated amygdala reactivity.



Early evidence supports these predictions. Sleep deprivation has been demonstrated to decrease amygdala-PFC connectivity, relative to a full night of sleep (Gujar et al. 2011, Yoo et al. 2007). Moreover, a night of sleep restores amygdala-mPFC connectivity; the extent of this is selectively and specifically predicted by the physiological quality of prior REM sleep (van der Helm et al. 2011).

Second, sleep loss, including that of REM sleep, should impair the ability for emotional discrimination while still resulting in as much (or more) outright sensitivity. It is just such a profile of heightened sensitivity to strongly emotional stimuli that has been observed at a neural level (Gujar et al. 2011, Yoo et al. 2007), together with a decrease in discrimination specificity at a behavioral level (van der Helm et al. 2010, Yoo et al. 2007). It should be noted, however, that these data employ total sleep deprivation, and confirmation of the involvement of REM sleep (either through selective deprivation or by demonstrating that qualitative features of REM sleep reflect reduced adrenergic tone, such as EEG activity) has yet to be published.

Third, achieving optimal noradrenergic recalibration by way of REM sleep should facilitate the appropriate downstream physiological and behavioral responses to salient relative to nonsalient stimuli. Indeed, in fear conditioning and extinction paradigms, REM sleep has been associated with more nuanced fear responses (measured by subjective shock expectancy as well as skin conductance) and is capable of appropriately generating or inhibiting fear responses, depending on environmental cues signaling threatening or nonthreatening circumstances. In contrast, sleep deprivation is associated with increased fear responses to nonthreatening cues (Menz et al. 2013; Pace-Schott et al. 2009; Spoomaker et al. 2010, 2012), indicative of a failure to appropriately discriminate between threatening and nonthreatening information.

## IMPLICATIONS FOR PSYCHIATRIC CONDITIONS

The empirical evidence reviewed in this review, combined with these two proposed REM sleep functional models, suggests that pathological disruption to sleep, including REM sleep, should lead to maladaptive neural and behavioral emotional responses. From a clinical standpoint, this is of particular relevance considering that numerous psychiatric disorders demonstrate (a) comorbid abnormalities in REM sleep, (b) alterations in noradrenaline activity, and (c) corresponding disruptions in limbic-prefrontal functioning. Below, we focus the discussion on two disorders wherein both of these models may be of causal importance: (a) PTSD in which there is diminished and disrupted REM sleep, leading to excessive noradrenergic tone; and (b) major depression in which there may be excess REM sleep and consequently diminutive noradrenergic tone.

### Posttraumatic Stress Disorder

Building on emerging empirical evidence (Germain et al. 2008, Spoomaker & Montgomery 2008), both of the above-proposed REM sleep models have relevance to the etiology and pathophysiology of PTSD, as well as for understanding recent pharmacological treatment interventions.

PTSD has been associated not only with decreases in the total time spent in REM sleep (Germain 2013, Lavie et al. 1979, Mellman et al. 1997) but also with qualitative REM sleep abnormalities. These included marked fragmentation of REM sleep (Breslau et al. 2004, Habukawa et al. 2007, Mellman et al. 2002) (indicative of arousal-related awakenings from REM sleep linked to adrenergic surges) and increases in the sympathetic tone of the autonomic nervous system (Harvey et al. 2003, Mellman & Hipolito 2006) (reflective of heightening adrenergic activity). Of additional relevance, both objective sleep disturbances occurring in the immediate aftermath of trauma exposure, as well as heightened sympathetic vagal tone during REM sleep, are associated

with an increased risk of PTSD (Koren et al. 2002, Mellman et al. 2002). Congruently, the presence of insomnia in war veterans during the four months after deployment is a significant predictor of PTSD symptom development (Wright et al. 2011).

These sleep abnormalities are also paralleled by significant alterations in the noradrenergic system in PTSD. On the basis of recent neuroimaging data, patients with PTSD express exaggerated locus coeruleus activity during REM sleep compared to controls, suggesting a persistence (rather than normal quiescence) of the noradrenergic system in REM sleep (Germain et al. 2013). Consistent with this finding, PTSD patients do not show the normal overnight reduction in noradrenaline concentrations (as indexed by noradrenaline metabolite concentrations in urine) relative to daytime concentrations (Mellman et al. 1995). Furthermore, the degree of the nocturnal noradrenaline alterations are negatively correlated with measures of sleep quality in both control and PTSD groups, such that greater noradrenaline concentrations across the night are associated with worse sleep quality (Mellman et al. 1995). PTSD patients also experience elevated postsleep noradrenaline concentrations in cerebrospinal fluid, and the amount of this positively predicts the severity of PTSD symptoms (Mellman et al. 1995). Given recent findings suggesting a similar hypernoradrenaline profile following REM sleep deprivation (Mallick & Singh 2011), it is possible that the elevated noradrenergic activity in PTSD is a direct consequence of REM sleep disruptions.

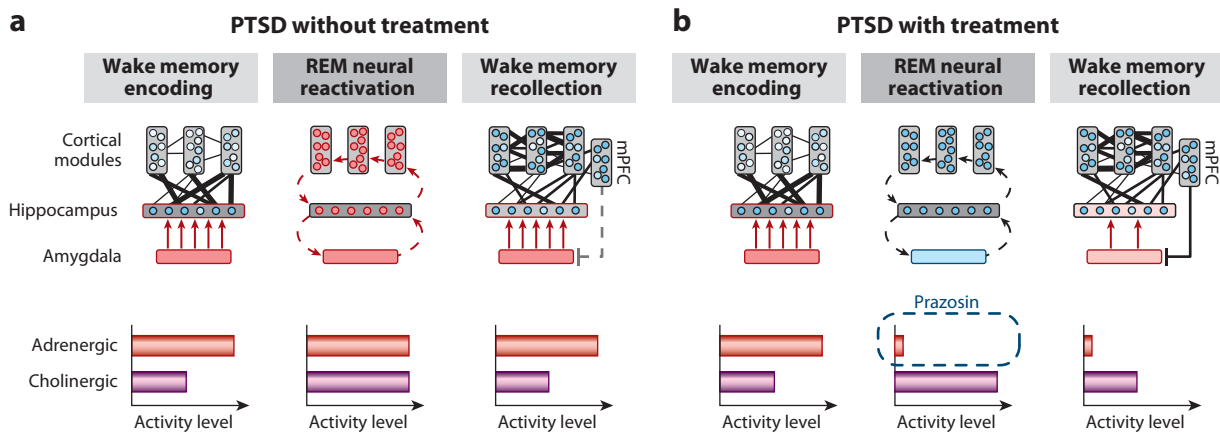
These reported PTSD deficits in REM sleep amount, together with adrenergic activity during REM, have significant implications regarding the two above proposed functional models of REM sleep. Regarding the first emotional memory depotentiation hypothesis, if the decoupling emotion from memory is not achieved across the first night following a trauma experience, as may occur in PTSD, the model predicts a repeat attempt of the affective demodulation on subsequent nights as the strength of the emotional tag associated with the memory would remain high. If this process fails a second time, the same events will continue to repeat across ensuing nights. It is just such a cycle of REM sleep dreaming (nightmares) that represents a key diagnostic feature of PTSD (Lavie 2001). It may not be coincidental that these patients also continue to display hyperarousal reactions to associated trauma cues (Harvey et al. 2003, Pole 2007). In addition, this suggests that the process of separating the affective tone from the emotional experience has not been accomplished and is hence consistently relived during subsequent cued or deliberate waking recollection (**Figure 7a**). We offer the thesis that the PTSD pathological persistence of central brain adrenergic activity during REM sleep in particular, reflected in hyperarousal signals (Harvey et al. 2003, Pole 2007, Strawn & Geraciotti 2008), prevents the capacity of REM sleep to palliatively decrease the emotion from the traumatic memory, leaving some patients unable to depotentiate the emotion of this stored experience. Moreover, the consequential next-day persistent amygdala hyperreactivity may further prevent the capacity for a return of adaptive amygdala-PFC connectivity and hence regulation.

The second model of REM sleep emotional recalibration would separately predict that the sleep disruption and related hypernoradrenergic tone observed in PTSD should shift the locus coeruleus-amygdala-PFC network functioning into a mode of poor emotional stimulus specificity yet with persistent (or excessive) sensitivity (described in **Figure 8**). Consistent with this prediction, common symptoms of PTSD not only include hyperarousal and an increased startle response but also a generalization of the fear response to commonly nonthreatening stimuli. The former two are indicative of heightened sensitivity, the latter of decreased emotional specificity (Jovanovic et al. 2009, 2012). Similarly, PTSD patients produce a fear response of equal magnitude to both threat- and nonthreat-related stimuli, preventing emotion discrimination, whereas healthy controls show specificity only to threat cues (Grillon & Morgan 1999). Further supporting this theory, and potentially underlying the alterations in salience discrimination, PTSD patients express hyperactivity of the amygdala yet hypoactivity of the PFC, which is a profile similar to that



23.20

Goldstein • Walker



**Figure 7**

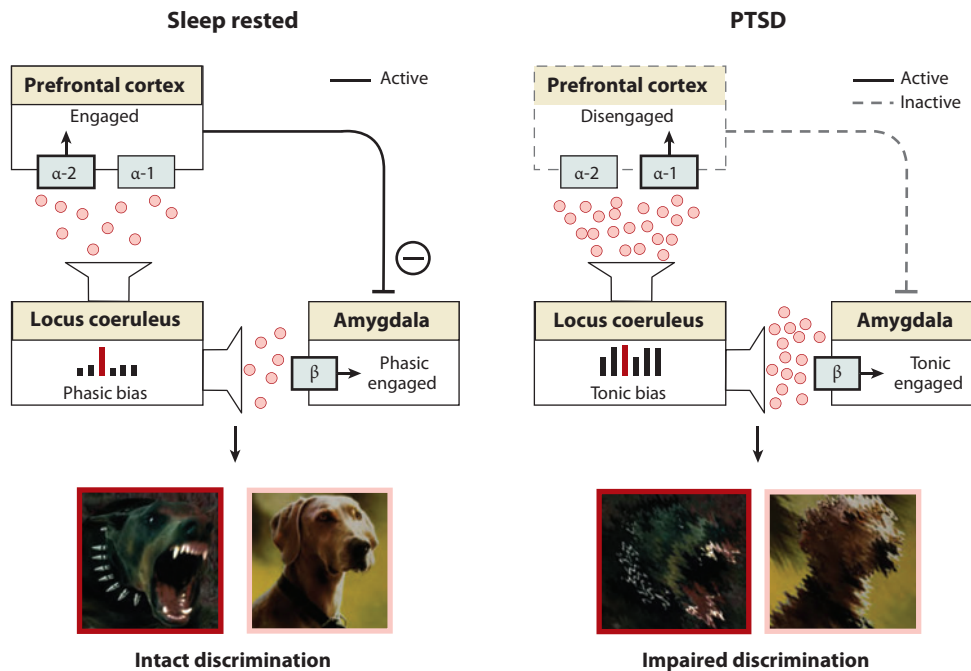
The rapid-eye movement (REM) sleep to forget sleep to remember model applied to posttraumatic stress disorder (PTSD). (a) REM sleep in PTSD without treatment, characterized by a pathological persistence of central brain adrenergic activity (note the difference between the middle panel *a* and the middle panel of **Figure 3a**). Elevated adrenergic activity during REM sleep prevents the depotentiation of the emotional tone associated with salient, including traumatic, experiences. (b) REM sleep in PTSD with treatment by prazosin, allowing for the reduction in adrenergic levels during REM sleep (note difference in middle panels between *a* and *b*). Consequently, there is the restored opportunity for the dissipation of emotion from the prior trauma experiences, preventing hyperarousal reactions during subsequent postsleep memory recall.

observed in sleep-deprived healthy controls (**Figure 8**) (Motomura et al. 2013, Yoo et al. 2007). Thus, deficits of REM sleep in PTSD may prevent the normal overnight restoration of lowered adrenergic tone and, at the same time, may result in an altered pattern of the locus coeruleus-amygdala-PFC activity, one that impairs emotional specificity and thus discrimination, leading to generalized and hypersensitive responses.

Finally, both models predict that treatments dissipating adrenergic activity during REM sleep would have a therapeutic clinical outcome in PTSD. It is just such a benefit that appears to be represented by the recent pharmacological intervention success in PTSD patients using the drug prazosin, which blocks the  $\alpha$ -1 adrenergic receptor. Given nocturnally, patients with combat PTSD and civilian PTSD both demonstrate a restoration of REM sleep, together with decreases in trauma-dream symptomatology (Calohan et al. 2010; Raskind et al. 2003, 2007; Taylor et al. 2008). The proposed REM sleep models offer putative underlying neurobiological mechanisms explaining this pharmacological treatment success (**Figure 7b**). Specifically, the nighttime blockade of central adrenergic activity during REM sleep in PTSD dissipates levels back to a potentially critical subthreshold, normative level. As a consequence, the pharmacologically imposed quiescence of the noradrenergic system at night would (a) allow the first stages of emotional (trauma) memory depotentiation during REM sleep to occur and, by doing so, improve clinical symptomatology associated with hyperarousal as well as trauma memory; and (b) additionally provide a recalibration of next-day noradrenaline levels that restore appropriate locus coeruleus-amygdala-PFC activity, allowing the appropriate sensitivity and specificity of emotional responses.

### Major Depression

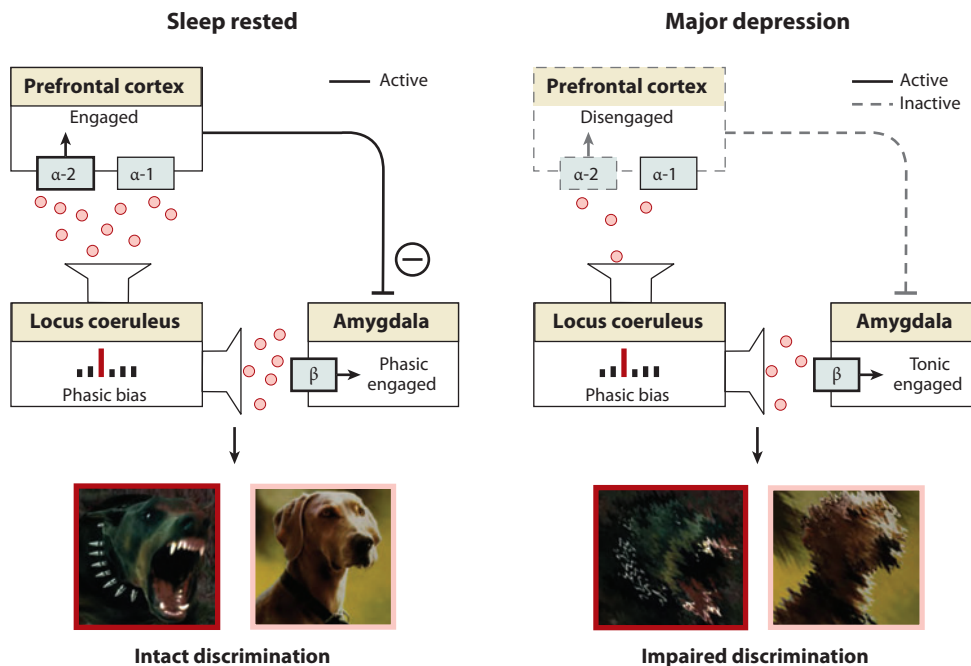
Major depression is associated with exaggerated REM sleep qualities, including (a) a faster entrance into REM sleep, (b) increased intensity of REM sleep (indexed by the number of rapid-eye movements), and (c) longer duration of REM sleep periods (Armitage 2007, Buysse 2004, Franzen



**Figure 8**

The rapid-eye movement (REM) sleep emotion recalibration model applied to posttraumatic stress disorder (PTSD). Elevated noradrenergic activity during REM sleep in PTSD prevents the next-day recalibration of the associated salience network, impairing optimal emotion discrimination, similar to the state of sleep deprivation (also see the sleep deprivation profile in **Figure 6b**).

& Buysse 2008, Gottesmann & Gottesman 2007, Harvey et al. 2003, Palagini et al. 2013, Tsuno et al. 2005). Major depression has also been linked to deficiencies in monoamine activity, including noradrenaline (Blier & Briley 2011, El Mansari et al. 2010, Hamon & Blier 2013, Ordway et al. 2003). In the context of the REM sleep recalibration model, the suppression of locus coeruleus activity occurring during REM sleep is predicted to cause a dose-dependent decrease in associated noradrenalin levels through the night. Therefore, the greater duration and/or intensity of REM sleep often reported in major depression may provide a mechanistic explanation for the abnormally low levels of noradrenaline commonly observed with this condition (Blier & Briley 2011, El Mansari et al. 2010, Hamon & Blier 2013, Ordway et al. 2003). Furthermore, the resulting diminished noradrenaline concentrations caused by excess REM sleep would decrease binding to the  $\alpha$ -2 receptor in the mPFC (**Figure 9**). As a consequence, there would be impaired mPFC engagement and top-down control of the amygdala (Aston-Jones & Cohen 2005, Ramos & Arnsten 2007). Because of this reduced noradrenaline availability and the associated decrease in mPFC activation, the REM sleep recalibration model would also predict increases in amygdala sensitivity to nonsalient information in major depression, as well as impairments in emotional salience discrimination. Emerging evidence suggests exactly this profile: Patients with major depression express nonspecific amygdala reactivity that does not discriminate between negative, neutral, and positive images (Ritchey et al. 2011). Thus, the profile of generalized amygdala responsiveness observed in major depression may, in part, be driven by the blunting of noradrenaline activity caused by excess amounts of REM sleep, altering PFC-amygdala emotional sensitivity and specificity.



**Figure 9**

Rapid-eye movement (REM) sleep emotion recalibration model applied to major depression. Exaggerated REM sleep qualities in major depression produce an excessive blunting in next-day noradrenergic activity, resulting in too little noradrenaline for appropriate emotional salience detection.

If correct, pharmacologically increasing noradrenaline concentrations and/or decreasing REM sleep should result in an amelioration of depressive symptoms, including restoration of appropriate salience discrimination. Consistent with the model, pharmacologically increasing concentrations of noradrenaline improves emotional signal discrimination of affective face stimuli (Harmer 2004, 2009). Moreover, noradrenaline reuptake inhibitors as well as dual noradrenaline/serotonin reuptake inhibitors prescribed for treating major depression—both of which increase noradrenaline concentrations (Hamon & Blier 2013, Holshoe 2009, Tribl et al. 2013, Trivedi & Daly 2008)—restore REM sleep features in major depression, prolonging the time it takes to enter REM sleep and decreasing the total duration of REM sleep (Holshoe 2009, Tribl et al. 2013). Furthermore, total and REM-specific sleep deprivation alone, without additional pharmacological intervention, can lead to a rapid antidepressant effect in major depression (reviewed in Benedetti & Colombo 2011, Wu & Bunney 1990). In summary, the disproportionate REM sleep observed in major depression may trigger excess next-day blunting of the adrenergic system and also provides a mechanistic explanation for the antidepressant effects (including the restoration of emotional salience discrimination) of both pharmacologically enhancing noradrenaline availability and decreasing REM sleep characteristics.

## CONCLUSION

A causal and bidirectional relationship appears to exist between sleep and emotional brain function. Without sleep, the ability to adequately regulate and express emotions is compromised

at both a brain and behavioral level, common to both the positive and negative domains of the emotional spectrum. In contrast, sleep, and specifically REM sleep, provides a restoration of appropriate next-day emotional reactivity and salience discrimination. Basic emotional stimulus responsiveness, sleep, and consistent REM sleep promote the offline processing and consolidation of emotional memories.

Uniting these empirical findings with the basic neurobiological features of REM sleep, an emotional homeostasis framework emerges in which REM sleep provides at least two discreet functional benefits (*a*) the therapeutic depotentiation of emotion from prior affective experiences and (*b*) a next-day recalibration of noradrenergic salience signaling by the brain, restoring optimal emotional sensitivity and specificity. Moreover, these models offer clarifying neurobiological insights underlying the neural etiology and expressed symptomatology of PTSD and major depression, as well as novel mechanistic routes through which pharmacological interventions currently used in PTSD and major depression may operate.

Although considerable progress has been made in understanding the relationship between sleep and affective brain function, the field is still only in its infancy, with much yet to understand. We currently know little about the interplay between the peripheral and central nervous system mechanisms that lead to abnormalities of emotion processing caused by sleep deprivation. Similarly, the precise combination of sleep factors that reset the balance for optimal next-day emotional brain function is unclear. Is it the stages of sleep, their quantity or quality, their brain oscillations, or their neurochemistry? Or is it the cycling nature of sleep and/or the timing of sleep? Conversely, why do some emotional events we experience while awake impact our sleep at night, and others do not? Is it their intensity, novelty, salience, valence, temporal proximity to sleep, relationship with past experiences, or the degree of unresolved understanding? We need to look no further than mood disorders to appreciate this wake-sleep reciprocity that modulates affective states. What does seem clear, however, is that the clinical, professional, and public health ramifications of this emerging association between sleep and affective brain function are substantive.

## DISCLOSURE STATEMENT

The authors are not aware of any affiliations, memberships, funding, or financial holdings that might be perceived as affecting the objectivity of this review.

## ACKNOWLEDGMENTS

The authors thank Allison Harvey, Stephanie Greer, Jared Saletin, and Els van der Helm for helping insights and discussion regarding the content of this review. This work was supported by grants R01AG031164, R01MH093537, and R21DA031939 (to M.P.W.) and F31MH094075 (to A.N.G.) from the National Institutes of Health.

## LITERATURE CITED

- Anderson C, Platten CR. 2011. Sleep deprivation lowers inhibition and enhances impulsivity to negative stimuli. *Behav. Brain Res.* 217:463–66
- Appelhans B, Luecken L. 2006. Heart rate variability as an index of regulated emotional responding. *Rev. Gen. Psychol.* 10:229–40
- Armitage R. 2007. Sleep and circadian rhythms in mood disorders. *Acta Psychiatr. Scand.* 115(Suppl. 433):104–15
- Arnedt JT, Conroy DA, Brower KJ. 2007. Treatment options for sleep disturbances during alcohol recovery. *J. Addict. Dis.* 26:41–54

Goldstein • Walker





- Aston-Jones G, Cohen JD. 2005. An integrative theory of locus coeruleus-norepinephrine function: adaptive gain and optimal performance. *Annu. Rev. Neurosci.* 28:403–50
- Benedetti F, Colombo C. 2011. Sleep deprivation in mood disorders. *Neuropsychobiology* 64:141–51
- Benedict C, Brooks SJ, O'Daly OG, Almen MS, Morell A, et al. 2012. Acute sleep deprivation enhances the brain's response to hedonic food stimuli: an fMRI study. *J. Clin. Endocrinol. Metab.* 97:E443–47
- Berger RH, Miller AL, Seifer R, Cares SR, LeBourgeois MK. 2012. Acute sleep restriction effects on emotion responses in 30- to 36-month-old children. *J. Sleep Res.* 21:235–46
- Bernert RA, Joiner TE. 2007. Sleep disturbances and suicide risk: a review of the literature. *Neuropsychiatr. Dis. Treat.* 3:735–43
- Berridge CW, Foote SL. 1991. Effects of locus coeruleus activation on electroencephalographic activity in neocortex and hippocampus. *J. Neurosci.* 11:3135–45
- Blier P, Briley M. 2011. The noradrenergic symptom cluster: clinical expression and neuropharmacology. *Neuropsychiatr. Dis. Treat.* 7:15–20
- Breslau N, Roth T, Burduvali E, Kapke A, Schultz L, Roehrs T. 2004. Sleep in lifetime posttraumatic stress disorder: a community-based polysomnographic study. *Arch. Gen. Psychiatry* 61:508–16
- Brower KJ, Perron BE. 2010. Sleep disturbance as a universal risk factor for relapse in addictions to psychoactive substances. *Med. Hypotheses* 74:928–33
- Buyse DJ. 2004. Insomnia, depression and aging. Assessing sleep and mood interactions in older adults. *Geriatrics* 59:47–51, quiz 52
- Cahill L. 2000. Neurobiological mechanisms of emotionally influenced, long-term memory. *Prog. Brain Res.* 126:29–37
- Calohan J, Peterson K, Peskind ER, Raskind MA. 2010. Prazosin treatment of trauma nightmares and sleep disturbance in soldiers deployed in Iraq. *J. Trauma. Stress* 23:645–48
- Cape EG, Jones BE. 1998. Differential modulation of high-frequency  $\gamma$ -electroencephalogram activity and sleep-wake state by noradrenaline and serotonin microinjections into the region of cholinergic basal ganglia neurons. *J. Neurosci.* 18:2653–66
- Craig AD. 2010. The sentient self. *Brain Struct. Funct.* 214:563–77
- Craig AD. 2011. Significance of the insula for the evolution of human awareness of feelings from the body. *Ann. NY Acad. Sci.* 1225:72–82
- Critchley HD. 2005. Neural mechanisms of autonomic, affective, and cognitive integration. *J. Comp. Neurol.* 493:154–66
- Critchley HD. 2009. Psychophysiology of neural, cognitive and affective integration: fMRI and autonomic indicators. *Int. J. Psychophysiol.* 73:88–94
- Dahl RE. 1996. The impact of inadequate sleep on children's daytime cognitive function. *Semin. Pediatr. Neurol.* 3:44–50
- Dang-Vu TT, Schabus M, Desseilles M, Sterpenich V, Bonjean M, Maquet P. 2010. Functional neuroimaging insights into the physiology of human sleep. *Sleep* 33:1589–603
- Davidson RJ. 2002. Anxiety and affective style: role of prefrontal cortex and amygdala. *Biol. Psychiatry* 51:68–80
- Delgado MR, Olsson A, Phelps EA. 2006. Extending animal models of fear conditioning to humans. *Biol. Psychol.* 73:39–48
- Dimsdale JE, Norman D, DeJardin D, Wallace MS. 2007. The effect of opioids on sleep architecture. *J. Clin. Sleep Med.* 3:33–36
- Dinges DF, Pack F, Williams K, Gillen KA, Powell JW, et al. 1997. Cumulative sleepiness, mood disturbance, and psychomotor vigilance performance decrements during a week of sleep restricted to 4–5 hours per night. *Sleep* 20:267–77
- Dolcos F, LaBar KS, Cabeza R. 2005. Remembering one year later: role of the amygdala and the medial temporal lobe memory system in retrieving emotional memories. *Proc. Natl. Acad. Sci. USA* 102:2626–31
- Drevets WC, Savitz J, Trimble M. 2008. The subgenual anterior cingulate cortex in mood disorders. *CNS Spectr.* 13:663–81
- El Mansari M, Guiard BP, Chernoiz O, Ghanbari R, Katz N, Blier P. 2010. Relevance of norepinephrine-dopamine interactions in the treatment of major depressive disorder. *CNS Neurosci. Ther.* 16:e1–17
- Etkin A. 2010. Functional neuroanatomy of anxiety: a neural circuit perspective. *Curr. Top. Behav. Neurosci.* 2:251–77

- Etkin A, Wager TD. 2007. Functional neuroimaging of anxiety: a meta-analysis of emotional processing in PTSD, social anxiety disorder, and specific phobia. *Am. J. Psychiatry* 164:1476–88
- Franzen PL, Buysse DJ. 2008. Sleep disturbances and depression: risk relationships for subsequent depression and therapeutic implications. *Dialogues Clin. Neurosci.* 10:473–81
- Germain A. 2013. Sleep disturbances as the hallmark of PTSD: Where are we now? *Am. J. Psychiatry* 170:372–82
- Germain A, Buysse DJ, Nofzinger E. 2008. Sleep-specific mechanisms underlying posttraumatic stress disorder: integrative review and neurobiological hypotheses. *Sleep Med. Rev.* 12:185–95
- Germain A, James J, Insana S, Herringa RJ, Mammen O, et al. 2013. A window into the invisible wound of war: functional neuroimaging of REM sleep in returning combat veterans with PTSD. *Psychiatry Res.* 211:176–79
- Goldstein AN, Greer SM, Saletin JM, Harvey AG, Nitschke JB, Walker MP. 2013. Tired and apprehensive: anxiety amplifies the impact of sleep loss on aversive brain anticipation. *J. Neurosci.* 33:10607–15
- Gottesmann C, Gottesman I. 2007. The neurobiological characteristics of rapid eye movement (REM) sleep are candidate endophenotypes of depression, schizophrenia, mental retardation and dementia. *Prog. Neurobiol.* 81:237–50
- Greer SM, Goldstein AN, Walker MP. 2013. The impact of sleep deprivation on food desire in the human brain. *Nat. Commun.* 4:2259
- Grillon C, Morgan CA 3rd. 1999. Fear-potentiated startle conditioning to explicit and contextual cues in Gulf War veterans with posttraumatic stress disorder. *J. Abnorm. Psychol.* 108:134–42
- Gujar N, McDonald SA, Nishida M, Walker MP. 2010. A role for REM sleep in recalibrating the sensitivity of the human brain to specific emotions. *Cereb. Cortex* 21:115–23
- Gujar N, Yoo SS, Hu P, Walker MP. 2011. Sleep deprivation amplifies reactivity of brain reward networks, biasing the appraisal of positive emotional experiences. *J. Neurosci.* 31:4466–74
- Habukawa M, Uchimura N, Maeda M, Kotorii N, Maeda H. 2007. Sleep findings in young adult patients with posttraumatic stress disorder. *Biol. Psychiatry* 62:1179–82
- Hamon M, Blier P. 2013. Monoamine neurocircuitry in depression and strategies for new treatments. *Prog. Neuropsychopharmacol. Biol. Psychiatry* 45:54–63
- Harmer CJ, O'Sullivan U, Favaron E, Massey-Chase R, Ayres R, et al. 2009. Effect of acute antidepressant administration on negative affective bias in depressed patients. *Am. J. Psychiatry* 166:1178–84
- Harmer CJ, Shelley NC, Cowen PJ, Goodwin GM. 2004. Increased positive versus negative affective perception and memory in healthy volunteers following selective serotonin and norepinephrine reuptake inhibition. *Am. J. Psychiatry* 161:1256–63
- Harrison NA, Gray MA, Gianaros PJ, Critchley HD. 2010. The embodiment of emotional feelings in the brain. *J. Neurosci.* 30:12878–84
- Hartley CA, Phelps EA. 2010. Changing fear: the neurocircuitry of emotion regulation. *Neuropsychopharmacology* 35:136–46
- Harvey AG. 2011. Sleep and circadian functioning: critical mechanisms in the mood disorders? *Annu. Rev. Clin. Psychol.* 7:297–319
- Harvey AG, Jones C, Schmidt DA. 2003. Sleep and posttraumatic stress disorder: a review. *Clin. Psychol. Rev.* 23:377–407
- Harvey AG, Murray G, Chandler RA, Soehner A. 2011. Sleep disturbance as transdiagnostic: consideration of neurobiological mechanisms. *Clin. Psychol. Rev.* 31:225–35
- Hermans EJ, van Marle HJ, Ossewaarde L, Henckens MJ, Qin S, et al. 2011. Stress-related noradrenergic activity prompts large-scale neural network reconfiguration. *Science* 334:1151–53
- Holshoe JM. 2009. Antidepressants and sleep: a review. *Perspect. Psychiatr. Care* 45:191–97
- Horne JA. 1985. Sleep function, with particular reference to sleep deprivation. *Ann. Clin. Res.* 17:199–208
- Hu P, Stylos-Allen M, Walker MP. 2006. Sleep facilitates consolidation of emotionally arousing declarative memory. *Psychol. Sci.* 17:891–98
- Itoi K, Sugimoto N. 2010. The brainstem noradrenergic systems in stress, anxiety and depression. *J. Neuroendocrinol.* 22:355–61
- Jones MW, Wilson MA. 2005. Theta rhythms coordinate hippocampal-prefrontal interactions in a spatial memory task. *PLoS Biol.* 3:e402

23:26

Goldstein • Walker



- Jovanovic T, Kazama A, Bachevalier J, Davis M. 2012. Impaired safety signal learning may be a biomarker of PTSD. *Neuropharmacology* 62:695–704
- Jovanovic T, Norrholm SD, Fennell JE, Keyes M, Fiallos AM, et al. 2009. Posttraumatic stress disorder may be associated with impaired fear inhibition: relation to symptom severity. *Psychiatry Res.* 167:151–60
- Kametani H, Kawamura H. 1990. Alterations in acetylcholine release in the rat hippocampus during sleep-wakefulness detected by intracerebral dialysis. *Life Sci.* 47:421–26
- Kamphuis J, Meerlo P, Koolhaas JM, Lancel M. 2012. Poor sleep as a potential causal factor in aggression and violence. *Sleep Med.* 13:327–34
- Keane PE, Candy JM, Bradley PB. 1976. The role of endogenous catecholamines in the regulation of electrocortical activity in the encephale isole cat. *Electroencephalogr. Clin. Neurophysiol.* 41:561–70
- Killgore WD, Schwab ZJ, Weber M, Kipman M, Deldonno SR, et al. 2013. Daytime sleepiness affects prefrontal regulation of food intake. *Neuroimage* 71:216–23
- Klein B, Wilhelm FH, Temp L, Margraf J, Wiederhold BK, Rasch B. 2013. Sleep enhances exposure therapy. *Psychol. Med.* In press
- Koren D, Arnon I, Lavie P, Klein E. 2002. Sleep complaints as early predictors of posttraumatic stress disorder: a 1-year prospective study of injured survivors of motor vehicle accidents. *Am. J. Psychiatry* 159:855–57
- Lavie P. 2001. Sleep disturbances in the wake of traumatic events. *N. Engl. J. Med.* 345:1825–32
- Lavie P, Hefez A, Halperin G, Enoch D. 1979. Long-term effects of traumatic war-related events on sleep. *Am. J. Psychiatry* 136:175–78
- Libedinsky C, Smith DV, Teng CS, Namburi P, Chen VW, et al. 2011. Sleep deprivation alters valuation signals in the ventromedial prefrontal cortex. *Front. Behav. Neurosci.* 5:70
- Mallick BN, Singh A. 2011. REM sleep loss increases brain excitability: role of noradrenaline and its mechanism of action. *Sleep Med. Rev.* 15:165–78
- Marrosu F, Portas C, Mascia MS, Casu MA, Fa M, et al. 1995. Microdialysis measurement of cortical and hippocampal acetylcholine release during sleep-wake cycle in freely moving cats. *Brain Res.* 671:329–32
- McGaugh JL. 2004. The amygdala modulates the consolidation of memories of emotionally arousing experiences. *Annu. Rev. Neurosci.* 27:1–28
- McGinty DJ, Harper RM. 1976. Dorsal raphe neurons: depression of firing during sleep in cats. *Brain Res.* 101:569–75
- McGlinchey EL, Talbot LS, Chang KH, Kaplan KA, Dahl RE, Harvey AG. 2011. The effect of sleep deprivation on vocal expression of emotion in adolescents and adults. *Sleep* 34:1233–41
- McIntyre CK, McGaugh JL, Williams CL. 2012. Interacting brain systems modulate memory consolidation. *Neurosci. Biobehav. Rev.* 36:1750–62
- McKenna BS, Dickinson DL, Orff HJ, Drummond SP. 2007. The effects of one night of sleep deprivation on known-risk and ambiguous-risk decisions. *J. Sleep Res.* 16:245–52
- Mellman TA, Bustamante V, Fins AI, Pigeon WR, Nolan B. 2002. REM sleep and the early development of posttraumatic stress disorder. *Am. J. Psychiatry* 159:1696–701
- Mellman TA, Hipolito MM. 2006. Sleep disturbances in the aftermath of trauma and posttraumatic stress disorder. *CNS Spectr.* 11:611–15
- Mellman TA, Kumar A, Kulick-Bell R, Kumar M, Nolan B. 1995. Nocturnal/daytime urine noradrenergic measures and sleep in combat-related PTSD. *Biol. Psychiatry* 38:174–79
- Mellman TA, Nolan B, Hebding J, Kulick-Bell R, Dominguez R. 1997. A polysomnographic comparison of veterans with combat-related PTSD, depressed men, and non-ill controls. *Sleep* 20:46–51
- Mendl M, Burman OH, Paul ES. 2010. An integrative and functional framework for the study of animal emotion and mood. *Proc. Biol. Sci.* 277:2895–904
- Menz MM, Rihm JS, Salari N, Born J, Kalisch R, et al. 2013. The role of sleep and sleep deprivation in consolidating fear memories. *Neuroimage* 75:87–96
- Minkel J, Htaik O, Banks S, Dinges D. 2011. Emotional expressiveness in sleep-deprived healthy adults. *Behav. Sleep Med.* 9:5–14
- Minkel JD, Banks S, Htaik O, Moreta MC, Jones CW, et al. 2012. Sleep deprivation and stressors: evidence for elevated negative affect in response to mild stressors when sleep deprived. *Emotion* 12:1015–20
- Miyachi S, Misaki M, Kan S, Fukunaga T, Koike T. 2009. Human brain activity time-locked to rapid eye movements during REM sleep. *Exp. Brain Res.* 192:657–67



- Motomura Y, Kitamura S, Oba K, Terasawa Y, Enomoto M, et al. 2013. Sleep debt elicits negative emotional reaction through diminished amygdala-anterior cingulate functional connectivity. *PLoS ONE* 8:e56578
- Nishida M, Pearsall J, Buckner RL, Walker MP. 2009. REM sleep, prefrontal theta, and the consolidation of human emotional memory. *Cereb. Cortex* 19:1158–66
- Nitschke JB, Sarinopoulos I, Oathes DJ, Johnstone T, Whalen PJ, et al. 2009. Anticipatory activation in the amygdala and anterior cingulate in generalized anxiety disorder and prediction of treatment response. *Am. J. Psychiatry* 166:302–10
- Nozinger EA. 2005. Functional neuroimaging of sleep. *Semin. Neurol.* 25:9–18
- Ochsner KN, Ray RR, Hughes B, McRae K, Cooper JC, et al. 2009. Bottom-up and top-down processes in emotion generation: common and distinct neural mechanisms. *Psychol. Sci.* 20:1322–31
- Ordway GA, Schenk J, Stockmeier CA, May W, Klimek V. 2003. Elevated agonist binding to  $\alpha 2$ -adrenoceptors in the locus coeruleus in major depression. *Biol. Psychiatry* 53:315–23
- Ouyang M, Hellman K, Abel T, Thomas SA. 2004. Adrenergic signaling plays a critical role in the maintenance of waking and in the regulation of REM sleep. *J. Neurophysiol.* 92:2071–82
- Pace-Schott EF, Hobson JA. 2002. The neurobiology of sleep: genetics, cellular physiology and subcortical networks. *Nat. Rev. Neurosci.* 3:591–605
- Pace-Schott EF, Milad MR, Orr SP, Rauch SL, Stickgold R, Pitman RK. 2009. Sleep promotes generalization of extinction of conditioned fear. *Sleep* 32:19–26
- Pace-Schott EF, Stickgold R, Muzur A, Wigren PE, Ward AS, et al. 2005. Sleep quality deteriorates over a binge-abstinence cycle in chronic smoked cocaine users. *Psychopharmacology* 179:873–83
- Palagini L, Baglioni C, Ciapparelli A, Gemignani A, Riemann D. 2013. REM sleep dysregulation in depression: state of the art. *Sleep Med. Rev.* 17:377–90
- Papadimitriou GN, Linkowski P. 2005. Sleep disturbance in anxiety disorders. *Int. Rev. Psychiatry* 17:229–36
- Paré D, Collins DR, Pelletier JG. 2002. Amygdala oscillations and the consolidation of emotional memories. *Trends Cogn. Sci.* 6:306–14
- Park SP. 2002. In vivo microdialysis measures of extracellular norepinephrine in the rat amygdala during sleep-wakefulness. *J. Korean Med. Sci.* 17:395–99
- Paulus MP, Stein MB. 2006. An insular view of anxiety. *Biol. Psychiatry* 60:383–87
- Payne JD, Chambers AM, Kensinger EA. 2012. Sleep promotes lasting changes in selective memory for emotional scenes. *Front. Integr. Neurosci.* 6:108
- Payne JD, Kensinger EA. 2010. Sleep's role in the consolidation of emotional episodic memories. *Curr. Dir. Psychol. Sci.* 19:290–95
- Peterson MJ, Benca RM. 2006. Sleep in mood disorders. *Psychiatr. Clin. North Am.* 29:1009–32, abstract ix
- Phelps EA, Delgado MR, Nearing KI, LeDoux JE. 2004. Extinction learning in humans: role of the amygdala and vmPFC. *Neuron* 43:897–905
- Plutchik R. 1995. Outward and inward directed aggressiveness: the interaction between violence and suicidality. *Pharmacopsychiatry* 28(Suppl. 2):47–57
- Pole N. 2007. The psychophysiology of posttraumatic stress disorder: a meta-analysis. *Psychol. Bull.* 133:725–46
- Prather AA, Bogdan R, Hariri AR. 2013. Impact of sleep quality on amygdala reactivity, negative affect, and perceived stress. *Psychosom. Med.* 75:350–58
- Ramos BP, Arnsten AF. 2007. Adrenergic pharmacology and cognition: focus on the prefrontal cortex. *Pharmacol. Ther.* 113:523–36
- Raskind MA, Peskind ER, Hoff DJ, Hart KL, Holmes HA, et al. 2007. A parallel group placebo controlled study of prazosin for trauma nightmares and sleep disturbance in combat veterans with post-traumatic stress disorder. *Biol. Psychiatry* 61:928–34
- Raskind MA, Peskind ER, Kanter ED, Petrie EC, Radant A, et al. 2003. Reduction of nightmares and other PTSD symptoms in combat veterans by prazosin: a placebo-controlled study. *Am. J. Psychiatry* 160:371–73
- Rauch SL, Whalen PJ, Shin LM, McInerney SC, Macklin ML, et al. 2000. Exaggerated amygdala response to masked facial stimuli in posttraumatic stress disorder: a functional MRI study. *Biol. Psychiatry* 47:769–76
- Ritchey M, Dolcos F, Eddington KM, Strauman TJ, Cabeza R. 2011. Neural correlates of emotional processing in depression: changes with cognitive behavioral therapy and predictors of treatment response. *J. Psychiatr. Res.* 45:577–87



- Roozendaal B, McReynolds JR, Van der Zee EA, Lee S, McGaugh JL, McIntyre CK. 2009. Glucocorticoid effects on memory consolidation depend on functional interactions between the medial prefrontal cortex and basolateral amygdala. *J. Neurosci.* 29:14299–308
- Sapolsky RM, Romero LM, Munck AU. 2000. How do glucocorticoids influence stress responses? Integrating permissive, suppressive, stimulatory, and preparative actions. *Endocr. Rev.* 21:55–89
- Sauvet F, Leftheriotis G, Gomez-Merino D, Langrume C, Drogou C, et al. 2010. Effect of acute sleep deprivation on vascular function in healthy subjects. *J. Appl. Physiol.* 108:68–75
- Schwarz JF, Popp R, Haas J, Zulley J, Geisler P, et al. 2013. Shortened night sleep impairs facial responsiveness to emotional stimuli. *Biol. Psychol.* 93:41–44
- Shin LM, Rauch SL, Pitman RK. 2006. Amygdala, medial prefrontal cortex, and hippocampal function in PTSD. *Ann. NY Acad. Sci.* 1071:67–79
- Shouse MN, Staba RJ, Saquib SF, Farber PR. 2000. Monoamines and sleep: microdialysis findings in pons and amygdala. *Brain Res.* 860:181–89
- Siegel JM, Rogawski MA. 1988. A function for REM sleep: regulation of noradrenergic receptor sensitivity. *Brain Res.* 472:213–33
- Siegle GJ, Thompson W, Carter CS, Steinhauer SR, Thase ME. 2007. Increased amygdala and decreased dorsolateral prefrontal BOLD responses in unipolar depression: related and independent features. *Biol. Psychiatry* 61:198–209
- Spoormaker VI, Montgomery P. 2008. Disturbed sleep in post-traumatic stress disorder: secondary symptom or core feature? *Sleep Med. Rev.* 12:169–84
- Spoormaker VI, Schroter MS, Andrade KC, Dresler M, Kiem SA, et al. 2012. Effects of rapid eye movement sleep deprivation on fear extinction recall and prediction error signaling. *Hum. Brain Mapp.* 33:2362–76
- Spoormaker VI, Sturm A, Andrade KC, Schroter MS, Goya-Maldonado R, et al. 2010. The neural correlates and temporal sequence of the relationship between shock exposure, disturbed sleep and impaired consolidation of fear extinction. *J. Psychiatr. Res.* 44:1121–28
- St-Onge MP, McReynolds A, Trivedi ZB, Roberts AL, Sy M, Hirsch J. 2012. Sleep restriction leads to increased activation of brain regions sensitive to food stimuli. *Am. J. Clin. Nutr.* 95:818–24
- Stern WC, Morgane PJ. 1974. Theoretical view of REM sleep function: maintenance of catecholamine systems in the central nervous system. *Behav. Biol.* 11:1–32
- Sterpenich V, Albouy G, Boly M, Vandewalle G, Darsaud A, et al. 2007. Sleep-related hippocampo-cortical interplay during emotional memory recollection. *PLoS Biol.* 5:e282
- Strawn JR, Geraciotti TD Jr. 2008. Noradrenergic dysfunction and the psychopharmacology of posttraumatic stress disorder. *Depress. Anxiety* 25:260–71
- Sullivan GM, Coplan JD, Kent JM, Gorman JM. 1999. The noradrenergic system in pathological anxiety: a focus on panic with relevance to generalized anxiety and phobias. *Biol. Psychiatry* 46:1205–18
- Taylor FB, Martin P, Thompson C, Williams J, Mellman TA, et al. 2008. Prazosin effects on objective sleep measures and clinical symptoms in civilian trauma posttraumatic stress disorder: a placebo-controlled study. *Biol. Psychiatry* 63:629–32
- Tribl GG, Wetter TC, Schredl M. 2013. Dreaming under antidepressants: a systematic review on evidence in depressive patients and healthy volunteers. *Sleep Med. Rev.* 17:133–42
- Trivedi MH, Daly EJ. 2008. Treatment strategies to improve and sustain remission in major depressive disorder. *Dialogues Clin. Neurosci.* 10:377–84
- Tsuno N, Besset A, Ritchie K. 2005. Sleep and depression. *J. Clin. Psychiatry* 66:1254–69
- Valentino RJ, Van Bockstaele E. 2008. Convergent regulation of locus coeruleus activity as an adaptive response to stress. *Eur. J. Pharmacol.* 583:194–203
- van der Helm E, Gujar N, Walker MP. 2010. Sleep deprivation impairs the accurate recognition of human emotions. *Sleep* 33:335–42
- van der Helm E, Yao J, Dutt S, Rao V, Saletin JM, Walker MP. 2011. REM sleep depotentiates amygdala activity to previous emotional experiences. *Curr. Biol.* 21:2029–32
- van der Helm E, Walker MP. 2012. Sleep and affective brain regulation. *Soc. Personal. Psychol. Compass* 6:773–91
- van Marle HJ, Hermans EJ, Qin S, Fernández G. 2009. From specificity to sensitivity: How acute stress affects amygdala processing of biologically salient stimuli. *Biol. Psychiatry* 66:649–55



- van Marle HJ, Hermans EJ, Qin S, Overeem S, Fernández G. 2013. The effect of exogenous cortisol during sleep on the behavioral and neural correlates of emotional memory consolidation in humans. *Psychoneuroendocrinology* 38:1639–49
- Venkatraman V, Chuah YM, Huettel SA, Chee MW. 2007. Sleep deprivation elevates expectation of gains and attenuates response to losses following risky decisions. *Sleep* 30:603–9
- Volkow ND, Tomasi D, Wang GJ, Telang F, Fowler JS, et al. 2009. Hyperstimulation of striatal D2 receptors with sleep deprivation: implications for cognitive impairment. *Neuroimage* 45:1232–40
- Wagner U, Degirmenci M, Drosopoulos S, Perras B, Born J. 2005. Effects of cortisol suppression on sleep-associated consolidation of neutral and emotional memory. *Biol. Psychiatry* 58:885–93
- Wagner U, Gais S, Born J. 2001. Emotional memory formation is enhanced across sleep intervals with high amounts of rapid eye movement sleep. *Learn. Mem.* 8:112–19
- Wagner U, Hallschmid M, Rasch B, Born J. 2006. Brief sleep after learning keeps emotional memories alive for years. *Biol. Psychiatry* 60:788–90
- Walker MP. 2009. The role of sleep in cognition and emotion. *Ann. NY Acad. Sci.* 1156:168–97
- Walker MP, van der Helm E. 2009. Overnight therapy? The role of sleep in emotional brain processing. *Psychol. Bull.* 135:731–48
- Wright KM, Britt TW, Bliese PD, Adler AB, Picchioni D, Moore D. 2011. Insomnia as predictor versus outcome of PTSD and depression among Iraq combat veterans. *J. Clin. Psychol.* 67:1240–58
- Wu JC, Bunney WE. 1990. The biological basis of an antidepressant response to sleep deprivation and relapse: review and hypothesis. *Am. J. Psychiatry* 147:14–21
- Yoo SS, Gujar N, Hu P, Jolesz FA, Walker MP. 2007. The human emotional brain without sleep—a prefrontal amygdala disconnect. *Curr. Biol.* 17:R877–78
- Zhong X, Hilton HJ, Gates GJ, Jelic S, Stern Y, et al. 2005. Increased sympathetic and decreased parasympathetic cardiovascular modulation in normal humans with acute sleep deprivation. *J. Appl. Physiol.* 98:2024–32
- Zohar D, Tzischinsky O, Epstein R, Lavie P. 2005. The effects of sleep loss on medical residents' emotional reactions to work events: a cognitive-energy model. *Sleep* 28:47–54



23:30 Goldstein • Walker